



*STATUS OF  
COCONUT CULTIVATION IN  
VAVUNIYA DISTRICT  
2002*



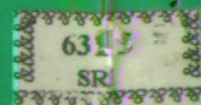
A Publication based on Census of Agriculture

*DEPARTMENT OF CENSUS AND STATISTICS*

ISBN – 955 – 577 - 456 - 0

Published in 2004

*Printed by NAITA Press  
Rajagiriya  
Tel. 2863902, 2863680*



## Preface

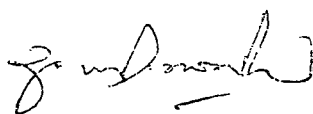
This brief report is prepared based on the information collected through the Census of Agriculture 2002 conducted by the Department of Census & Statistics. The evidences are there that the Coconut cultivation in Sri Lanka dates back prior to B.C. This is the largest perennial crop grown in the country by extent and it spreads over 1 million acres. The aggregate extent could be ascertained in few months time when this series of district-wise reports are concluded. It is not an easy task to determine the absolute extent under coconut as this crop synonymous with complicated nature of growing patterns. However, an effort has been made to estimate them considering with different patterns and given in this brief issue by DS/AGA divisions and GN divisions.

The total extent under Coconut reported in Vavuniya District at the Census of Agriculture 1982 was 1,050 acres (about 425 hectares) including the extent covered by scattered trees. The corresponding extent reported in the Census of Agriculture 2002 is about 1,821 acres (737 hectares).

I wish to thank District Statistical Staff headed by Mrs. M.M. Abraham, then Statistician of Vavuniya district who had made a valuable contribution in conducting the Census of Agriculture in the district.

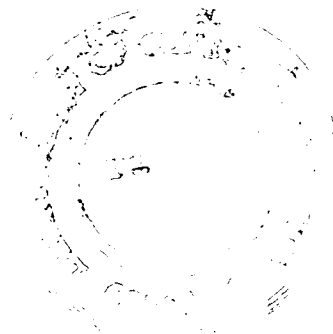
My sincere appreciations are due to Ms. W.A.P.S. Perera, Statistical Officer who volunteered to prepare Statistical tables of this document under the supervision of Ms. D.D.M.V. Perera, Senior Statistician and under the guidance of Mr. A.M.U. Dissanayake, Director in-charge of the Agriculture and Environment Statistics Division of the Department.

I hope this report would be of immense help to the planners especially who are working in the agencies related with the development of Coconut cultivation in Sri Lanka.



A.G.W. Nanayakkara  
Superintendent of Census and  
Director General of Census & Statistics

Department of Census & Statistics  
P.O. Box 563  
Colombo  
25<sup>th</sup> June 2004  
Email: [agriculture@statistics.gov.lk](mailto:agriculture@statistics.gov.lk)  
Website: <http://www.statistics.gov.lk>



## Contents

	Page
<b>Preface</b>	
<b>Introduction</b>	1
1. Background	
2. Data.	
3. Method of data collection	
4. Contents in this document	
5. Limitations	
<b>A Brief Review</b>	3
<b>Statistical Tables and Charts</b>	
<b>Table No. 1.</b> Distribution of Coconut Extent by sector and by D.S/A.G.A Division – Vavuniya District – in Acres	4
<b>Table No.2.</b> Distribution of Coconut Extent by sector and by D.S/A.G.A Division – Vavuniya District – in Hectares	4
<b>Table No.3.</b> Distribution of Coconut Extent by status of Production and by D.S/A.G.A Division – Vavuniya District – in Acres and Hectares	5
<b>Table No.4.</b> Distribution of Coconut cultivation According to growing pattern and by D.S/A.G.A – Vavuniya District – in Acres	5
<b>Chart 1.</b> Distribution of Coconut cultivation According to growing pattern and Sector – Vavuniya District	6
<b>Chart 2.</b> Distribution of Extent under Coconut by DS Division – Vavuniya District	6
<b>Distribution of Coconut cultivation According to growing pattern         and by G.N. Division – Vavuniya District – in Acres</b>	
<b>Table No.4.1 Vavuniya D.S/A.G.A Division</b>	7
<b>Table No.4.2 Vavuniya North (Nedunkerny) D.S/A.G.A Division</b>	8
<b>Table No.4.3 Vavuniya South D.S/A.G.A Division</b>	9
<b>Table No.4.4 Vengalcheddikulam D.S/A.G.A Division</b>	10
Annexure 1. Estimation Procedure – Extent Under Coconut	11
List of Publications on Census of Agriculture - 2002	12

## INTRODUCTION

1. **Background:** The statistical information given in this document is based on the data collected through the Census of Agriculture conducted in the year 2002. The Census of Agriculture is an Island-wide operation for the collection and derivation of statistical information on the Country's agricultural structure, using "Agriculture Holding" as the unit of enumeration. The entire operation is carried out under the Census Ordinance by the Government of Sri Lanka.

Coconut is the second largest crop grown in the country. In extent it is next to the staple food crop "rice". The aggregate extent under Coconut in the country for the Census year 2002 is not yet determined and will be published soon. However, the Coconut extent reported for the year 1982 according to Census of agriculture of that year was about 1,028,562 acres (416,422 hectares). To analyze the complete set of information collected through the Census of Agriculture - 2002 relating to about 1.8 million operational holdings above ¼ acre in extent would take some time. Therefore, to serve immediate needs of users, some important variables collected at the Census relating to the small holding sector was extracted with the help of Enumerators and published in a district-wise series of publications.

Due to the factors such as urbanization, opening up of new industrial ventures, fragmentation of holdings, crop diversification, absence of operators on the holdings due to unsettle condition that prevailed specially, in the districts of North and East, one would expect a wide variation on the extent under Coconut compared with the previous Census of Agriculture 1982. As mentioned above due to one reason or other, these variations would be seen in many localities. However, the general feeling is that the Coconut crop has not declined sizably over the time due to land fragmentation because; the people tend to plant Coconut plant in their homesteads as replacement for other crops. Similarly, large holdings where Coconut was in compact cultivation, after fragmentation would have been converted homesteads with scattered Coconut trees. This situation could be evaluated when this district-wise publication on the Status of Coconut Cultivation is completed.

2. **Data:** In this Census, the scope and content was mainly focused on the items such as (a). Agricultural Holdings, (b). Agricultural Operators, (c). Crop Extent, (d). Livestock numbers, (e). Land utilization, and (f). Agricultural machinery and equipment.
3. **Method of Data Collection:** For the operational point of view the entire agricultural sector in the country was divided in to two sectors namely, (a) Estate or large holdings (b). Small Holdings.
  - Estate Sector was defined as operational holdings or units of 20 acres or more in extent operated by an Individual or group of persons under one operational status, such as on own account, in-partnership, for a private person, or for an institution. In the instances where different parcels of the holding may add up to 20 acres or more, if so it was not considered an Estate. Estate should have at least one parcel of which the extent 20 acres or more.

- Small Holding Sector was defined as all holdings, which are not falling into the category of estates.

The trained Enumerators visited each and every census unit in order of the list of Housing units, Institutions, Collective living quarters, and Non-housing units and screened out for Agricultural Operators through a schedule known as "AC 1." They have been instructed to conduct personal interviews with respective operators and collect the specific information required for this Census. While in respect of the estate sector, the information was collected through a mail questionnaire, which was addressed to every Estate Operator/Superintendent in accordance with the inventory of Estates prepared prior to the Census.

4. **Content in this document:** The data relating to Coconut cultivation which was collected at the census have been summarized and given here. They appear as follows.

*Small Holding Sector:*

- Extent of land (holdings) reported less than or equal to 40 perches (1/4 of an acre) having agricultural output mainly for home consumption: As these are very marginal land for the agricultural point of view, extent under a particular crop cannot be determined. Therefore, the Enumerators were instructed to report the basic information like number of trees/Bushes/creepers as appearing in those holdings with out going in to detail classifications. In respect of Coconut the information was collected on the followings.
  - (a). Number of Coconut trees (b). Number of King-coconut trees (both irrespective of production status).
- Holdings reporting extent more than 40 perches (1/4 of an acre) or producing agricultural output mainly for sale irrespective of land extent. The information was collected on the followings.
  - (a). Extent under Coconut viz. In-production, Not yet in-production
  - (b). If an extent under Coconut cannot be determined, then Number of scattered trees in-production, not yet in-production
  - (c). Number of King-coconut trees.

*Note: Coconut extent by age was also collected but not analyzed here. However, they will be published in due course.*

*Estate sector:*

- Similar information as in holdings above 40 perches.

**(5). Limitations:** It is important to note that the data given here on small holding sector by Grama Niladari divisions are based on the residence of the operators but not according to location of such holdings. However, at Divisional Secretariat division levels it is assumed that the difference between extent according to Operators' Residence and location of such holding are to be very marginal.

## A Brief Review

Vavuniya administrative district comprised of four A.G.A/D.S divisions and land area of about 486,000 acres (196,700 hectares) excluding inland waters. According to the Census of Agriculture 1982, there were about 68,626 acres (27,773 hectares) under agricultural activities out of which paddy land was accounted for 45 percent of the operated area. The extent operated under agriculture at the Census of Agriculture 2002 was limited only to 33,524 acres (13,567 hectares) and it was rather an exceptional situation due to the prolonged internal conflict prevailed until 2002 from the year 1983. The Census of Agriculture 2002 was conducted just after the signing of peace accord and the reference period for data collection was the cultivation year preceding August 2002. The agricultural activities were not operated in a normal pattern as a result of that a considerable drop in the operated area could be seen in Vavuniya district also. Out of the total paddy extent of about 48,500 acres in the district, the estimated extent of paddy land cultivated during Maha season 2001/02 was 15,000 acres. The total population enumerated in the Census of Population 1981 for Vavuniya district was 95,428 while due to the inability of conducting the Census of Population 2001 completely in the district, the estimated population figure available for the year 2001 was 149,835.

**Table: Number of Holdings and Extent Operated under Agriculture – 2002**

D.S/A.G.A. Division	Number of Land Holdings			Operated area under agriculture during 2002	Area in Acres	
	Less than ¼ acres	Above ¼ acres	Total		Paddy area Sown during 2001/02 Maha	Coconut  % to total Agri. area
	(2)	(3)	(4)		(6)	(7)
(1)				(5)		
1. Vavuniya	7,647	6,333	13,980	14,946	6178	1,186 (7.9)
2. Vavuniya North (Nedunkerny)	-	1,664	1,664	5,941	-	39 (0.6)
3. Vavuniya South	125	2,468	2,593	6,393	4794	328 (5.1)
4. Vengalcheddikulam	877	2,408	3,285	6,244	4053	268 (4.3)
<b>District Total</b>	<b>8,649</b>	<b>12,873</b>	<b>21,522</b>	<b>33,524</b>	<b>15,025</b>	<b>1,821 (5.4)</b>

The important crops cultivated in Vavuniya district are seasonal crops like Paddy, Gingelly, Blackgram, etc., other than very little area covered with perennial crops like Coconut and Mango. However, the details under variety of these crops cultivated and reported during the Census of Agriculture 2002 have not been analyzed yet fully and they will be made available in due course.

According to the Census of Agriculture 1982, the reported extent under Coconut was about 1,050 acres (425 hectares) while the aggregate extent under Coconut according to the Census of Agriculture 2002 was about 1,821 acres or 737 hectares.



**Table 1: Distribution of Operated Area and Extent under Coconut by Sector and DS/AGA Division  
Vavuniya District (In Acres)**

DS/AGA Division	Operated Area of Holdings			Extent under Coconut**			Number of King Coconut Trees
	Small Holding Sector	Estate Sector*	Total Extent	Small Holding Sector	Estate Sector*	Total Extent	
1 Vavuniya	14,946.4	-	14,946.4	1,186.2	-	1,186.2	2,702
2 Nedunkerny	5,940.6	-	5,940.6	38.7	-	38.7	95
3 Vavuniya South	6,393.4	-	6,393.4	328.2	-	328.2	991
4 Cheddikulam	6,244.3	-	6,244.3	267.6	-	267.6	146
<b>District Total</b>	<b>33,524.7</b>	<b>-</b>	<b>33,524.7</b>	<b>1,820.7</b>	<b>-</b>	<b>1,820.7</b>	<b>3,934</b>

\*No estates were functioning at the time of Census due to absence of operators on the holding and unsettled conditions.

\*\* Includes the estimated area covered by scattered coconut trees and excludes King coconut.

**Table 2 : Distribution of Operated Area and Extent under Coconut by Sector and DS/AGA Division  
Vavuniya District (In Hectares)**

DS/AGA Division	Operated Area of Holdings			Extent under Coconut **		
	Small Holding Sector	Estate Sector*	Total Extent	Small Holding Sector	Estate Sector*	Total Extent
1. Vavuniya	6,048.6	-	6,048.6	480.0	-	480.0
2 Nedunkerny	2,404.1	-	2,404.1	15.7	-	15.7
3 Vavuniya South	2,587.3	-	2,587.3	132.8	-	132.8
4 Cheddikulam	2,527.0	-	2,527.0	108.3	-	108.3
<b>District Total</b>	<b>13,567.0</b>	<b>-</b>	<b>13,567.0</b>	<b>736.8</b>	<b>-</b>	<b>736.8</b>

\*No estates were functioning at the time of Census due to absence of operators on the holding and unsettled conditions.

\*\* Includes the estimated area covered by scattered coconut trees and excludes King coconut.

**Table 3 : Distribution of Coconut Extent by Status of Production and by DS/AGA division  
Vavuniya District**

DS/AGA Division	Extent under Coconut (Acres)**			Extent under Coconut (Hectares)**		
	In Production	Not yet in Production	Total Extent	In Production	Not yet in Production	Total Extent
1 Vavuniya	555.8	630.4	1,186.2	224.9	255.1	480.0
2 Nedunkerny	14.0	24.7	38.7	5.7	10.0	15.7
3 Vavuniya South	146.3	181.9	328.2	59.2	73.6	132.8
4 Cheddikulam	75.8	191.8	267.6	30.7	77.6	108.3
<b>District Total</b>	<b>791.9</b>	<b>1,028.8</b>	<b>1,820.7</b>	<b>320.5</b>	<b>416.3</b>	<b>736.8</b>

\*\* Includes the estimated area covered by scattered coconut trees and excludes King coconut.

**Table 4 : Distribution of Coconut Cultivation According to Growing Pattern by DS/AGA Division  
Vavuniya District**

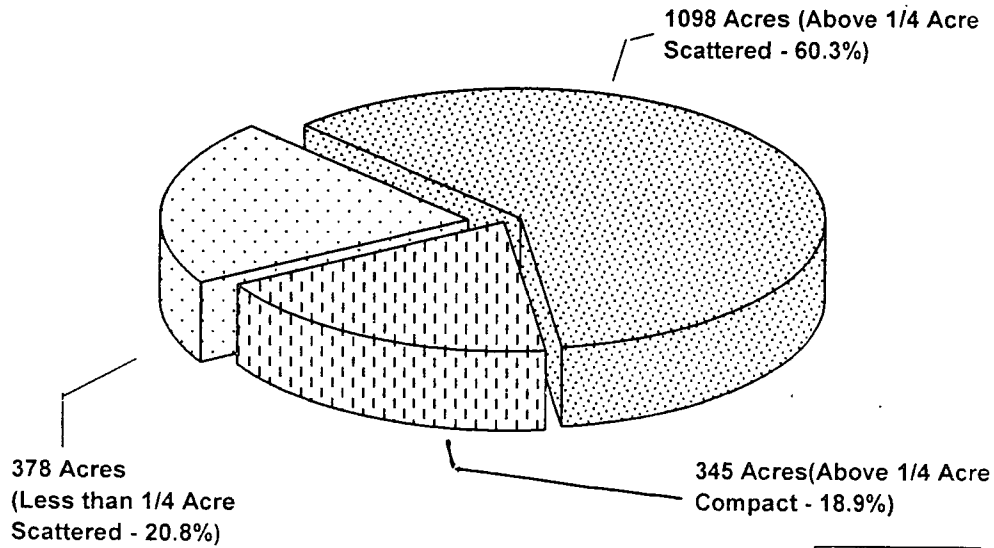
*Small Holding Sector*

DS/AGA Division	Operated Area of Holdings (Acres)			No. of Scattered Trees in Holdings Less than 1/4 Acre		Pattern of Cultivation in Holdings above 1/4 Acre of Land						Estimated Extent Under Coconut (Acres) **
	Less than 1/4 Acre	Above 1/4 Acre	Total Extent (Acres)	Coconut	King Coconut	Where Extent Can be Given (Acres)			Where Extent Cannot be Given (Trees)			
						In Production	Not yet in Production	Total Extent	Coconut		King Coconut	
									In Production	Not yet in Production		
1 Vavuniya	1,119.9	13,826.5	14,946.4	19,217	3,910	126.3	108.6	234.9	17,095	20,768	2,702	1,186.2
2 Nedunkerny	-	5,940.6	5,940.6	-	-	1.0	1.8	2.8	783	1,370	95	38.7
3 Vavuniya South	25.3	6,368.1	6,393.4	553	74	26.1	17.8	43.9	6,977	9,530	991	328.2
4 Cheddikulam	198.6	6,045.7	6,244.3	2,891	236	19.2	44.7	63.9	2,593	6,735	146	267.6
<b>District Total</b>	<b>1,343.8</b>	<b>32,180.9</b>	<b>33,524.7</b>	<b>22,661</b>	<b>4,220</b>	<b>172.6</b>	<b>172.9</b>	<b>345.5</b>	<b>27,448</b>	<b>38,403</b>	<b>3,934</b>	<b>1,820.7</b>

\*\* Includes the estimated area covered by scattered coconut trees and excludes King coconut.

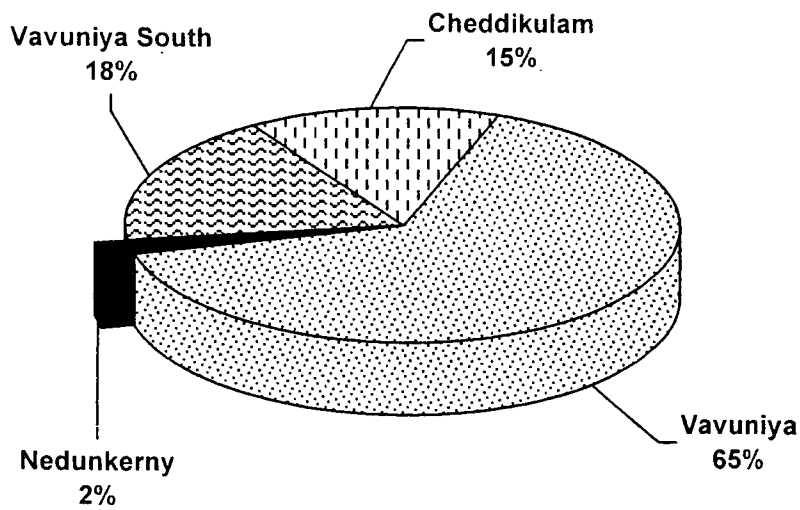


**Distribution of Coconut Cultivation According to Growing Pattern and Sector - Vavuniya District**



**Chart 1**

**Distribution of Extent under Coconut by DS Division Vavuniya District**



**Chart 2**

Table No.4.1 : Distribution of Coconut Cultivation according to growing pattern by GN Division

Vavuniya D.S/A.G.A Division

Small Holding Sector

GN Code	Operated Area of Holdings (Acres)			No. of Scattered Trees in Holdings Less than 1/4 Acre		Pattern of Cultivation in Holdings above 1/4 Acre of Land						Estimated Extent Under Coconut (Acres) **
	Less than 1/4 Acre	Above 1/4 Acre	Total Extent (Acres)	Coconut	King Coconut	Where Extent Can be Given (Acres)			Where Extent Cannot be Given (Trees)			
						In Production	Not yet in Production	Total Extent	Coconut			
									In Production	Not yet in Production	King Coconut	
005 Palamoodai	-	330.4	930.4	-	-	20.6	7.5	28.1	139	29	-	30.9
010 Marandamadu *												
015 Pantrikaeithakulam *												
020 Arumuhathanputhukulam*												
025 Semamadu *												
030 Maligai	-	30.3	30.3	-	-	-	-	-	-	-	-	
035 Mahilankulam *												
040 Omanthai *												
045 Maruthankulam *												
050 Ilamaruthankulam *												
055 Kallikulam *												
060 Nochchimoodai	23.8	106.6	130.4	175	1	-	-	-	140	54	-	6.2
065 Paranaddakal *												
070 Puthukulam	-	345.0	345.0	-	-	-	-	-	496	181	-	11.3
075 Sasthirikoolankulam	16.8	533.5	550.3	1	-	11.3	39.1	50.4	-	-	-	50.4
080 Eachchankulam	10.1	1,381.3	1,391.4	221	13	-	-	-	1,545	2,144	92	65.2
085 Kalmadhu	10.3	183.2	193.5	119	5	0.6	0.3	0.9	417	271	-	14.4
090 Velankulam *												
095 Poovarasankulam	-	389.0	389.0	-	-	4.0	-	4.0	342	778	109	22.7
100 Sekkadipitavu	31.3	630.3	661.6	363	16	2.8	6.8	9.6	460	1,514	-	48.6
105 Pampaimadhu	13.6	722.5	736.1	28	11	1.0	7.8	8.8	692	567	182	30.2
110 Marukkrapallai	65.0	717.4	782.4	337	-	-	2.6	2.6	550	1,488	8	42.2
115 Thandikulam	19.9	265.4	285.3	1,187	570	4.4	5.3	9.7	257	314	157	39.0
120 Maharambaikulam	31.0	625.3	656.3	545	47	-	-	-	877	1,606	283	50.5
125 Vavuniya Town North	38.6	281.3	319.9	1,380	96	1.8	2.0	3.8	401	621	96	43.8
130 Kaththarsinankulam	55.1	265.6	320.7	565	6	-	-	-	294	563	66	23.7
135 Paddanichchipuliyankulam	112.1	236.2	348.3	2,318	372	-	-	-	854	537	21	61.8
140 Nelukulam	103.0	376.5	479.5	422	59	23.8	-	23.8	669	217	60	45.6
145 Salampaikulam	3.8	255.7	259.5	19	7	1.3	0.5	1.8	310	124	9	9.3
150 Rajentherankulam	37.6	583.8	621.4	94	-	3.2	4.8	8.0	386	1,613	1	42.9
155 Koomankulam	28.1	301.4	329.5	325	73	14.8	14.3	29.1	799	207	113	51.3
160 Pandarikulam	62.2	394.8	457.0	1,811	314	-	-	-	1,366	862	121	67.3
165 Vairavapuliyankulam	112.2	742.9	855.1	2,159	554	17.3	3.5	20.8	593	126	162	68.8
170 Vavuniya Town	53.5	40.7	94.2	1,129	496	3.0	-	3.0	87	20	22	23.6
175 Rambaikulam	99.1	104.9	204.0	2,618	290	-	-	-	347	4	16	49.5
180 Thonikkal	114.6	200.6	315.2	2,442	809	5.1	0.1	5.2	494	703	203	65.8
185 Kanthapuram	17.0	714.6	731.6	237	55	6.8	3.4	10.2	1,348	1,314	392	58.5
190 Moondumurrippu	7.0	238.2	245.2	133	36	-	3.0	3.0	684	693	208	28.1
195 Kovilkulam	8.9	334.4	343.3	169	1	1.9	6.1	8.0	773	435	121	30.9
200 Velikulam	39.3	198.4	237.7	400	71	0.8	-	0.8	698	575	66	28.7
205 Samalankulam	-	542.0	542.0	-	-	1.3	1.5	2.8	455	1,737	156	39.3
210 Asikulam	6.0	1,154.3	1,160.3	20	8	0.5	-	0.5	622	1,471	38	35.7
DS Division Total	1,119.9	13,826.5	14,946.4	19,217	3,910	126.3	108.6	234.9	17,095	20,768	2,702	1,186.2

\* No inhabitants found

\*\* Includes the estimated area covered by scattered coconut trees and excludes King coconut.

Chk Date:	631.5
Accession Number	15007

Table No.4.2 : Distribution of Coconut Cultivation according to growing pattern by GN Division

Vavuniya North(Nedunkerny) D.S/A.G.A Division

Small Holding Sector

GN Code	Operated Area of Holdings (Acres)			No. of Scattered Trees in Holdings Less than 1/4 Acre		Pattern of Cultivation in Holdings above 1/4 Acre of Land						Estimated Extent Under Coconut (Acres) **	
	Less than 1/4 Acre	Above 1/4 Acre	Total Extent (Acres)			Where Extent Can be Given (Acres)			Where Extent Cannot be Given (Trees)				
				Coconut	King Coconut	In Production	Not yet in Production	Total Extent	Coconut				
	In Production	Not yet in Production	King Coconut										
005 Unchalkaddy	-	119.0	119.0	-	-	-	-	-	-	-	-	-	-
010 Vedaithakallu	-	60.0	60.0	-	-	-	-	-	-	-	-	-	-
015 Maruthodai	-	79.0	79.0	-	-	-	-	-	-	-	-	-	-
020 Paddikudiyiruppu	-	520.5	520.5	-	-	-	-	-	-	-	-	-	-
025 Katkulam	-	427.8	427.8	-	-	-	-	-	-	-	-	-	-
030 Nedunkerney South	-	458.0	458.0	-	-	0.5	-	0.5	-	-	-	-	0.5
035 Nedunkerney North	-	139.0	139.0	-	-	-	-	-	6	111	11	-	2.0
040 Olumadu	-	258.0	258.0	-	-	-	-	-	-	-	-	-	-
045 Mamadu	-	345.0	345.0	-	-	-	-	-	-	-	-	-	-
050 Kulavisuddan	-	623.5	623.5	-	-	-	1.0	1.0	16	679	65	-	12.6
055 Marailuppi	-	384.5	384.5	-	-	-	0.5	0.5	122	105	14	-	4.3
060 Paranthan	-	343.0	343.0	-	-	-	-	-	-	45	2	-	0.8
065 Anantharpuliyankuka	-	478.5	478.5	-	-	0.5	0.3	0.8	73	15	-	-	2.3
070 Sinnadampan	-	507.0	507.0	-	-	-	-	-	8	357	-	-	6.0
075 Nainamadu	-	269.0	269.0	-	-	-	-	-	-	-	-	-	-
080 Puliyankulam South	-	48.5	48.5	-	-	-	-	-	-	-	-	-	-
085 Puliyankulam North	-	104.0	104.0	-	-	-	-	-	4	-	-	-	0.1
090 Kanagarayankulam S.	-	234.3	234.3	-	-	-	-	-	179	9	-	-	3.0
095 Kanagarayankulam N.	-	233.0	233.0	-	-	-	-	-	323	20	3	-	5.7
100 Mannakulam	-	309.0	309.0	-	-	-	-	-	52	29	-	-	1.4
<b>DS Division Total</b>	-	<b>5,940.6</b>	<b>5,940.6</b>	-	-	<b>1.0</b>	<b>1.8</b>	<b>2.8</b>	<b>783</b>	<b>1,370</b>	<b>95</b>	-	<b>38.7</b>

\*\* Includes the estimated area covered by scattered coconut trees and excludes King coconut.

Table No.4.3 : Distribution of Coconut Cultivation according to growing pattern by GN Division

Vavuniya South D.S/A.G.A Division

Small Holding Sector

GN Code	Operated Area of Holdings (Acres)			No. of Scattered Trees in Holdings Less than 1/4 Acre		Pattern of Cultivation in Holdings above 1/4 Acre of Land						Estimated Extent Under Coconut (Acres) **
	Less than 1/4 Acre	Above 1/4 Acre	Total Extent (Acres)			Where Extent Can be Given (Acres)			Where Extent Cannot be Given (Trees)			
				Coconut	King Coconut	In Production	Not yet in Production	Total Extent	Coconut		King Coconut	
	In Production	Not yet in Production	In Production						Not yet in Production			
005 Periyaulukkulama	0.4	535.5	535.9	5	1	0.5	-	0.5	701	444	111	19.7
010 Poomaduva *												
015 Rankethgama *												
020 Marathamaduva	3.3	403.4	406.7	87	3	-	-	-	604	1,088	-	29.7
025 Pavakkukam track7*												
030 Avaranthulava *												
035 Acre 20;40,60	-	337.0	337.0	-	-	-	-	-	1,156	944	119	35.0
040 Acre 400	-	555.9	555.9	-	-		0.1	0.1	659	655	8	22.0
045 Madukanda	0.5	677.3	677.8	5	-	7.1	5.3	12.4	379	718	29	30.8
050 Iratperiyakulama	9.4	436.3	445.7	287	45	6.0	3.3	9.3	908	581	213	38.9
055 Alagalla	-	376.9	376.9	-	-	-	-	-	411	1,026	4	24.0
060 Avusathapitiya	-	465.0	465.0	-	-	2.0	-	2.0	195	539	57	14.2
065 Kalukunnamaduva	2.0	232.5	234.5	17	1	-	1.3	1.3	281	797	86	19.6
070 Nedunkulamaa	3.1	315.5	318.6	26	6	-	-	-	194	507	50	12.1
075 Mahamailakulama	-	346.6	346.6	-	-	1.0	0.5	1.5	319	505	20	15.2
080 Mamaduva	0.3	536.4	536.7	10	1	4.9	6.5	11.4	307	624	148	27.0
085 Mhakachchakodiya	-	637.5	637.5	-	-	3.1	-	3.1	283	243	-	11.9
090 Pudubulankulama	1.3	340.5	341.8	15	-	1.5	0.8	2.3	356	427	13	15.6
095 Thirappanmaduva *												
100 Agbopura	5.0	171.8	176.8	101	17	-	-	-	224	432	133	12.5
<b>DS Division Total</b>	<b>25.3</b>	<b>6,368.1</b>	<b>6,393.4</b>	<b>553</b>	<b>74</b>	<b>26.1</b>	<b>17.8</b>	<b>43.9</b>	<b>6,977</b>	<b>9,530</b>	<b>991</b>	<b>328.2</b>

\* No inhabitants found

\*\* Includes the estimated area covered by scattered coconut trees and excludes King coconut.

Table No.4.4 : Distribution of Coconut Cultivation according to growing pattern by GN Division  
Cheddikulam D.S/A.G.A Division

Small Holding Sector

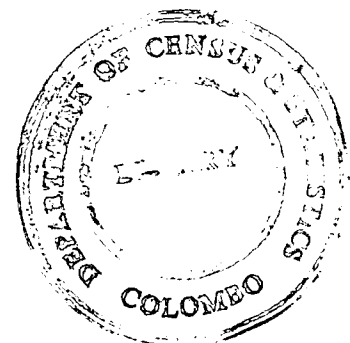
GN Code	Operated Area of Holdings (Acres)			No. of Scattered Trees in Holdings Less than 1/4 Acre		Pattern of Cultivation in Holdings above 1/4 Acre of Land						Estimated Extent Under Coconut (Acres) **
	Less than 1/4 Acre	Above 1/4 Acre	Total Extent (Acres)	Coconut	King Coconut	Where Extent Can be Given (Acres)			Where Extent Cannot be Given (Trees)			
						In Production	Not yet in Production	Total Extent	Coconut		King Coconut	
									In Production	Not yet in Production		
005 Periyathambanai	-	410.6	410.6	-	-	-	-	-	688	250	6	15.6
010 Kannady *												-
015 Piramanalankulam	-	71.0	71.0	-	-	-	-	-	20	20	-	0.7
020 Kurukkalputhukulam	0.1	493.0	493.1	-	-	-	2.8	2.8	83	706	-	16.0
025 Pavatkulam IV	-	242.5	242.5	-	-	-	-	-	147	176	4	5.4
030 Pavatkulam II	9.1	371.8	380.9	21	2	-	-	-	27	49	-	1.6
035 Sooduventhapilavu	29.6	545.6	575.2	178	-	-	-	-	131	537	1	14.1
040 Pavatkulam V	8.7	344.8	353.5	617	26	0.3	-	0.3	217	351	35	20.1
045 Kanthasamynagar	-	37.8	37.8	-	-	-	-	-	-	14	-	0.2
050 Andiyapuliyankulam	12.9	304.3	317.2	110	-	6.0	-	6.0	63	184	-	12.0
055 Periyakaddu	0.7	85.0	85.7	2	-	-	-	-	25	-	-	0.5
060 Christavakulam	18.3	-	18.3	-	-	-	-	-	-	-	-	-
065 Cheddikulam	6.8	36.0	42.8	144	45	-	-	-	77	162	-	6.4
070 Kankankulam	-	62.5	62.5	-	-	-	-	-	3	132	-	2.3
075 Pavatkulam 9	-	329.3	329.3	-	-	-	-	-	-	444	13	7.4
080 Periyapuliyalankula	85.0	621.2	706.2	1,352	107	11.3	1.0	12.3	150	1,146	49	56.4
085 Muhathankulam	8.2	410.0	418.2	188	9	-	23.8	23.8	265	238	12.0	35.3
090 Muthaliyarkulam	1.5	566.8	568.3	52	2	1.1	15.1	16.2	96	571	25	28.2
095 Neriyaikulam	0.5	604.0	604.5	3	-	0.5	-	0.5	84	863	-	16.3
100 Sinnachippikulam	17.2	509.5	526.7	224	45	-	2.0	2.0	517	892	1	29.1
<b>DS Division Total</b>	<b>198.6</b>	<b>6,045.7</b>	<b>6,244.3</b>	<b>2,891</b>	<b>236</b>	<b>19.2</b>	<b>44.7</b>	<b>63.9</b>	<b>2,593</b>	<b>6,735</b>	<b>146</b>	<b>267.6</b>

\* No inhabitants found

\*\* Includes the estimated area covered by scattered coconut trees and excludes King coconut.

Estimation Procedure – Extent under CoconutExtent In-production:

<b>Small Holding Sector: This consists of three components</b>	
<b>Item</b>	<b>Extent (acres)</b>
<ul style="list-style-type: none"> <li>• In the holdings more than <math>\frac{1}{4}</math> acre where the extent under coconut can be reported in acres</li> </ul>	a1
<ul style="list-style-type: none"> <li>• In the holdings more than <math>\frac{1}{4}</math> acre where the extent under coconut cannot be determined but number of trees were reported. Then the extent has been computed dividing the number of trees by 60. (Assumed that the number of trees cultivated per acre is 60).</li> </ul>	a2
<ul style="list-style-type: none"> <li>• In the holdings less than or equal to <math>\frac{1}{4}</math> acre where the extent under coconut cannot be determined but number of trees were reported irrespective of status of production. Then the similar proportion of trees in-production and not yet in-production reported in the holdings more than <math>\frac{1}{4}</math> in the same DS Division was used to estimate the number of trees in that category and divided by 60 to derive the extent.</li> </ul>	a3
<b>Estate Sector: This consists of two components</b>	
<ul style="list-style-type: none"> <li>• In the estate sector holdings where the extent under coconut can be reported in acres</li> </ul>	a4
<ul style="list-style-type: none"> <li>• In the estate holdings where the extent under coconut cannot be determined but number of trees were reported. Then the extent have been computed dividing the number of trees by 60.</li> </ul>	a5
<p>Likewise the total extent for a particular DS division was determined by taking the sum of above components i.e. (a1+a2+a3+a4+a5).</p> <p>Similarly the extent under not yet in-production was also computed.</p>	



<b>Publications on Census of Agriculture 2002</b>		<b>Price Rs.</b>
<b>Available for Sale at the Sales Counter of the Department of Census and Statistics, No. 231 Galle Road, Colombo 4</b>		
1.	Census of Agriculture – 2002 (Small Holding Sector) Preliminary Release No. 1	65.00
2.	Census of Agriculture – 2002 (Small Holding Sector) Preliminary Release No. 2	105.00
3.	Census of Agriculture – 2002 (Small Holding Sector) Preliminary Release No. 3	125.00
	Census of Agriculture – 2002 (Small Holding Sector) Preliminary District Reports	
4.	1. Colombo District	150.00
5.	2. Gampaha District	235.00
6.	3. Kalutara District	215.00
7.	4. Kandy District	165.00
8.	5. Matale District	185.00
9.	6. Nuwaraeliya District	125.00
10.	7. Galle District	180.00
11.	8. Matara District	175.00
12.	9. Hambantota District	135.00
13.	10. Jaffna District	105.00
14.	11. Mannar District	55.00
15.	12. Vavuniya District	85.00
16.	13. Mulativu District	90.00
17.	14. Killinochchi District	85.00
18.	15. Batticaloa District	155.00
19.	16. Ampara District	160.00
20.	17. Trincomalee District	125.00
21.	18. Kurunegala District	280.00
22.	19. Puttalam District	175.00
23.	20. Anuradhapura District	240.00
24.	21. Polonnaruwa District	115.00
25.	22. Badulla District	85.00
26.	23. Moneragala District	145.00
27.	24. Ratnapura District	180.00
28.	25. Kegalle District	160.00
29.	<b>Outlook on Agriculture – Colombo District 2002</b>	<b>90.00</b>
30.	<b>Sri Lanka Census of Agriculture – 2002 Report on Estate Sector</b>	<b>140.00</b>
31.	Status of Coconut Cultivation – Matara District	110.00
32.	Status of Coconut Cultivation – Colombo District	95.00
33.	Status of Coconut Cultivation – Polonnaruwa District	95.00
34.	Status of Coconut Cultivation – Moneragala District	95.00
35.	Status of Coconut Cultivation – Galle District	125.00
36.	Status of Coconut Cultivation – Hambantota District	50.00
37.	Status of Coconut Cultivation – Puttalam District	60.00
38.	Status of Coconut Cultivation – Kurunegala District	95.00
39.	Status of Coconut Cultivation – Gampaha District	70.00
40.	Status of Coconut Cultivation – Kegalle District	50.00
41.	Status of Coconut Cultivation – Badulla District	60.00

