



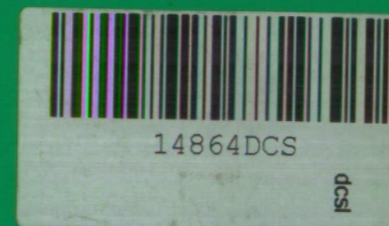
*STATUS OF
COCONUT CULTIVATION IN
MANNAR DISTRICT*

2002



A Publication based on Census of Agriculture

DEPARTMENT OF CENSUS AND STATISTICS



631.5
SRI

Printed by NAITA Press
Rajagiriya
Tel. 2863902, 2863680

ISBN-955-577-450-1

Preface

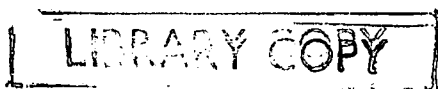
This brief report is prepared based on the information collected through the Census of Agriculture 2002 conducted by the Department of Census & Statistics. The evidences are there that the Coconut cultivation in Sri Lanka dates back prior to B.C. This is the largest perennial crop grown in the country by extent and it spreads over 1 million acres. The aggregate extent could be ascertained in few months time when this series of district-wise reports are concluded. It is not an easy task to determine the absolute extent under coconut as this crop synonymous with complicated nature of growing patterns. However, an effort has been made to estimate them considering with different patterns and given in this brief issue by DS/AGA divisions and GN divisions.

The total extent under Coconut reported in Mannar District at the Census of Agriculture 1982 was 2,918 acres (about 1,181 hectares) including the extent covered by scattered trees. The corresponding extent reported in the Census of Agriculture 2002 is about 2,715 acres (1,099 hectares).

I wish to thank District Statistical Staff headed by Mr. S. Arulpragasam, Statistician of Mannar district who had made a valuable contribution in conducting the Census of Agriculture in the district.

My sincere appreciations are due to Ms. Nyanie de Silva, Statistical Officer who volunteered to prepare Statistical tables of this document under the supervision of Ms. D.D.M.V. Perera, Senior Statistician and under the guidance of Mr. A.M.U. Dissanayake, Director in-charge of the Agriculture and Environment Statistics Division of the Department.

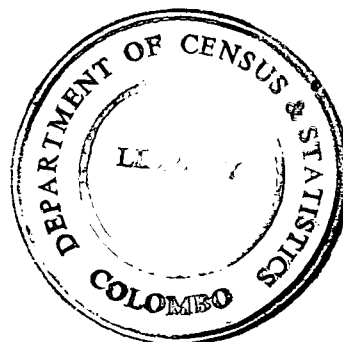
I hope this report would be of immense help to the planners especially who are working in the agencies related with the development of Coconut cultivation in Sri Lanka.



A handwritten signature in black ink, appearing to read "A.G.W. Nanayakkara".

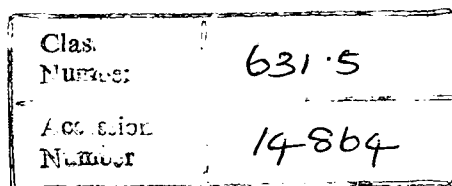
A.G.W. Nanayakkara
Superintendent of Census and
Director General of Census & Statistics

Department of Census & Statistics
P.O. Box 563
Colombo
21st June 2004
Email: agriculture@statistics.gov.lk
Website: <http://www.statistics.gov.lk>
<http://www.faorap-apcas.org>



Contents

	Page
Preface	
Introduction	1
1. Background	
2. Data.	
3. Method of data collection	
4. Contents in this document	
5. Limitations	
A Brief Review	3
Statistical Tables and Charts	
Table No. 1. Distribution of Coconut Extent by sector and by D.S/A.G.A Division – Mannar District – in Acres	4
Table No.2. Distribution of Coconut Extent by sector and by D.S/A.G.A Division – Mannar District – in Hectares	4
Table No.3. Distribution of Coconut Extent by status of Production and by D.S/A.G.A Division – Mannar District – in Acres and Hectares	5
Table No.4. Distribution of Coconut cultivation According to growing pattern and by D.S/A.G.A – Mannar District – in Acres	5
Chart 1. Distribution of Coconut cultivation According to growing pattern and Sector – Mannar District	6
Chart 2. Distribution of Extent under Coconut by DS Division – Mannar District	6
Distribution of Coconut cultivation According to growing pattern and by G.N. Division – Mannar District – in Acres	
Table No.4.1 Madu D.S/A.G.A Division	7
Table No.4.2 Mannar Town D.S/A.G.A Division	8
Table No.4.3 Manthai West D.S/A.G.A Division	9
Table No.4.4 Musali D.S/A.G.A Division	10
Table No.4.5 Nanaddan D.S/A.G.A Division	10
Annexture 1. Estimation Procedure – Extent Under Coconut	11
List of Publications on Census of Agriculture - 2002	12



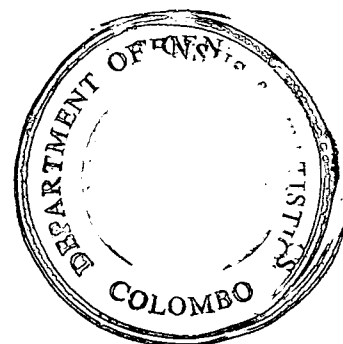
INTRODUCTION

1. **Background:** The statistical information given in this document is based on the data collected through the Census of Agriculture conducted in the year 2002. The Census of Agriculture is an Island-wide operation for the collection and derivation of statistical information on the Country's agricultural structure, using "Agriculture Holding" as the unit of enumeration. The entire operation is carried out under the Census Ordinance by the Government of Sri Lanka.

Coconut is the second largest crop grown in the country. In extent it is next to the staple food crop "rice". The aggregate extent under Coconut in the country for the Census year 2002 is not yet determined and will be published soon. However, the Coconut extent reported for the year 1982 according to Census of agriculture of that year was about 1,028,562 acres (416,422 hectares). To analyze the complete set of information collected through the Census of Agriculture - 2002 relating to about 1.8 million operational holdings above ¼ acre in extent would take some time. Therefore, to serve immediate needs of users, some important variables collected at the Census relating to the small holding sector was extracted with the help of Enumerators and published in a district-wise series of publications.

Due to the factors such as urbanization, opening up of new industrial ventures, fragmentation of holdings, crop diversification, absence of operators on the holdings due to unsettle condition that prevailed specially, in the districts of North and East, one would expect a wide variation on the extent under Coconut compared with the previous Census of Agriculture 1982. As mentioned above due to one reason or other, these variations would be seen in many localities. However, the general feeling is that the Coconut crop has not declined sizably over the time due to land fragmentation because; the people tend to plant Coconut plant in their homesteads as replacement for other crops. Similarly, large holdings where Coconut was in compact cultivation, after fragmentation would have been converted homesteads with scattered Coconut trees. This situation could be evaluated when this district-wise publication on the Status of Coconut Cultivation is completed.

2. **Data:** In this Census, the scope and content was mainly focused on the items such as (a). Agricultural Holdings, (b). Agricultural Operators, (c). Crop Extent, (d). Livestock numbers, (e). Land utilization, and (f). Agricultural machinery and equipment.
3. **Method of Data Collection:** For the operational point of view the entire agricultural sector in the country was divided in to two sectors namely, (a) Estate or large holdings (b). Small Holdings.
 - Estate Sector was defined as operational holdings or units of 20 acres or more in extent operated by an Individual or group of persons under one operational status, such as on own account, in-partnership, for a private person, or for an institution. In the instances where different parcels of the holding may add up to 20 acres or more, if so it was not considered an Estate. Estate should have at least one parcel of which the extent 20 acres or more.



- Small Holding Sector was defined as all holdings, which are not falling into the category of estates.

The trained Enumerators visited each and every census unit in order of the list of Housing units, Institutions, Collective living quarters, and Non-housing units and screened out for Agricultural Operators through a schedule known as "AC 1." They have been instructed to conduct personal interviews with respective operators and collect the specific information required for this Census. While in respect of the estate sector, the information was collected through a mail questionnaire, which was addressed to every Estate Operator/Superintendent in accordance with the inventory of Estates prepared prior to the Census.

4. **Content in this document:** The data relating to Coconut cultivation which was collected at the census have been summarized and given here. They appear as follows.

Small Holding Sector:

- Extent of land (holdings) reported less than or equal to 40 perches (1/4 of an acre) having agricultural output mainly for home consumption: As these are very marginal land for the agricultural point of view, extent under a particular crop cannot be determined. Therefore, the Enumerators were instructed to report the basic information like number of trees/Bushes/creepers as appearing in those holdings with out going in to detail classifications. In respect of Coconut the information was collected on the followings.
 - (a). Number of Coconut trees (b). Number of King-coconut trees (both irrespective of production status).
- Holdings reporting extent more than 40 perches (1/4 of an acre) or producing agricultural output mainly for sale irrespective of land extent. The information was collected on the followings.
 - (a). Extent under Coconut viz. In-production, Not yet in-production
 - (b). If an extent under Coconut cannot be determined, then Number of scattered trees in-production, not yet in-production
 - (c). Number of King-coconut trees.

Note: Coconut extent by age was also collected but not analyzed here. However, they will be published in due course.

Estate sector:

- Similar information as in holdings above 40 perches.

(5). **Limitations:** It is important to note that the data given here on small holding sector by Grama Niladari divisions are based on the residence of the operators but not according to location of such holdings. However, at Divisional Secretariat division levels it is assumed that the difference between extent according to Operators' Residence and location of such holding are to be very marginal.

A Brief Review

Mannar administrative district comprised of five A.G.A/D.S divisions and land area of about 465,000 acres (188,500 hectares) excluding inland waters. According to the Census of Agriculture 1982, there were about 45,673 acres (18,484 hectares) under agricultural activities out of which paddy land was accounted with 2/3. The extent operated under agriculture at the Census of Agriculture 2002 was only 21,719 acres due to the prolonged internal conflict prevailed in a very bad situation up to 2002 from the year 1983. The Census of Agriculture 2002 was conducted just after the signing of peace accord and the reference period for data collection was the cultivation year preceding August 2002. Therefore, the agricultural activities were not operated in a normal pattern. As such a considerable drop in the extent under operation could be seen in the district. Out of the total paddy extent of over 50,000 acres, it was guess-estimated that about 10,000 acres under paddy cultivation during the Maha season 2001/02 and it has expanded up to 23,000 acres during 2002/03 Maha season. The total population enumerated in the Census of Population 1981 for Mannar district was 106,235 while due to the inability of conducting the Census of Population 2001 completely in the district, the estimated population figure available for the year was 151,577.

Table: Number of Holdings and Extent Operated under Agriculture – 2002

D.S/A.G.A Division	Number of Land Holdings			Operated area under agriculture during 2002	Area in Acres	
	Less than ¼ acres	Above ¼ acres	Total		Paddy area operated during 2001/02 Maha	Coconut % to total Agri. area
	(1)	(2)	(3)		(4)	(5)
1. Madu	166	769	935	2,319	..	128 (5.5)
2. Mannar Town	6,428	742	7,170	4,268	..	1,177 (27.6)
3. Manthai west	1,638	1,507	3,145	5,666	..	351 (6.2)
4. Musali	361	85	446	363	..	136 (37.5)
5. Nanaddan	885	2,085	2,970	9,103	..	923 (10.1)
District Total	9,478	5,188	14,666	21,719	10,000*	2,715 (12.5)

* Guess-estimate

The perennial crops cultivated in Mannar district are found to be Coconut, Cashew and Palmyra. However, the details under variety of these crops cultivated and reported during the Census of Agriculture 2002 have not yet been analyzed fully and they will be made available in due course.

According to the Census of Agriculture 1982, the reported extent under Coconut was about 2,918 acres (1,181 hectares). Coconut cultivation in the district has become stagnant during the last two decades due to the disturbed conditions on the ground. The large holdings or Estates that had been operated during the year 1982 found to be abandoned at the time of Census of Agriculture 2002. The aggregate extent under Coconut according to the Census of Agriculture 2002 was about 2,715 acres or 1,099 hectares.

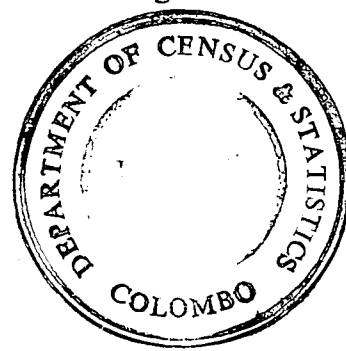


Table No. 1: Distribution of Operated Area and Extent Under Coconut by Sector and by DS/AGA Division - Mannar District (in Acres)

DS/AGA Division	Operated Area of Holdings (Acres)			Extent under Coconut (Acres) **			Number of King-Coconut Trees
	Small Holding Sector	Estate Sector*	Total Extent	Small Holding Sector	Estate Sector*	Total Extent	
1 Madhu	2,319.1	-	2,319.1	128.4	-	128.4	66
2 Mannar Town	4,268.0	-	4,268.0	1,177.4	-	1,177.4	604
3 Manthai West	5,665.6	-	5,665.6	350.8	-	350.8	197
4 Musali	362.7	-	362.7	135.7	-	135.7	4
5 Nanaddan	9,103.4	-	9,103.4	922.8	-	922.8	899
District Total	21,718.8	-	21,718.8	2,715.1	-	2,715.1	1,770

* No estates were functioning at the time of Census due to absence of operators on the holding and unsettled conditions.

** Includes the estimated area covered by scattered coconut trees and excludes King coconut

Table No. 2: Distribution of Operated Area and Extent Under Coconut by Sector and by DS/AGA Division - Mannar District (in Hectares)

DS/AGA Division	Operated Area of Holdings (Hectares)			Extent under Coconut (Hectares) **		
	Small Holding Sector	Estate Sector*	Total Extent	Small Holding Sector	Estate Sector*	Total Extent
1 Madhu	938.5	-	938.5	52.0	-	52.0
2 Mannar Town	1,727.2	-	1,727.2	476.5	-	476.5
3 Manthai West	2,292.8	-	2,292.8	142.0	-	142.0
4 Musali	146.8	-	146.8	54.9	-	54.9
5 Nanaddan	3,684.1	-	3,684.1	373.4	-	373.4
District Total	8,789.4	-	8,789.4	1,098.8	-	1,098.8

* No estates were functioning at the time of Census due to absence of operators on the holding and unsettled conditions.

** Includes the estimated area covered by scattered coconut trees and excludes King coconut

**Table No. 3: Distribution of Coconut Extent by Status of Production and by DS/AGA Division
Mannar District**

DS/AGA Division	Extent under Coconut (Acres) **			Extent under Coconut (Hectares) **		
	In Production	Not yet in-production	Total Extent	In-Production	Not yet in-production	Total Extent
1 Madhu	74.2	54.2	128.4	30.0	22.0	52.0
2 Mannar Town	834.8	342.6	1,177.4	337.8	138.7	476.5
3 Manthai West	203.1	147.7	350.8	82.2	59.8	142.0
4 Musali	117.6	18.1	135.7	47.6	7.3	54.9
5 Nanaddan	466.4	456.4	922.8	188.7	184.7	373.4
District Total	1,696.1	1,019.0	2,715.1	686.3	412.5	1,098.8

** Includes the estimated area covered by scattered coconut trees and excludes King coconut

**Table No. 4: Distribution of Coconut Cultivation according to Growing Pattern By DS/AGA Division
Mannar District**

Small Holding Sector

DS/AGA Division	Operated Area of Holdings (Acres)			No. of Scattered Trees in holdings less than 1/4 acre		Pattern of Cultivation in Holdings above 1/4 Acre of land						Estimated Extent Under Coconut (Acres)**
						where Extent can be given (Acres)			where Extent cannot be given (Trees)			
	Less than 1/4 acre	Above 1/4 acre	Total Extent	Coconut	King Coconut	In Production	Not yet in-Production	Total Extent	In Production	Not yet in-Production	King Coconut	
1 Madhu	20.9	2,298.2	2,319.1	979	48	32.1	24.9	57.0	1,948	1,355	66	128.4
2 Mannar Town	655.1	3,612.9	4,268.0	22,870	3,100	418.6	125.9	544.5	9,931	5,171	604	1,177.4
3 Manthai West	189.2	5,476.4	5,665.6	3,982	100	84.8	45.3	130.1	4,965	4,295	197	350.8
4 Musali	53.1	309.6	362.7	2,297	46	55.2	7.3	62.5	1,786	310	4	135.7
5 Nanaddan	135.5	8,967.9	9,103.4	4,428	66	254.6	245.2	499.8	10,502	10,475	899	922.8
District Total	1,053.8	20,665.0	21,718.8	34,556	3,360	845.3	448.6	1,293.9	29,132	21,606	1,770	2,715.1

** Includes the estimated area covered by scattered coconut trees and excludes King coconut

Ditribution of Coconut Extent According to Growing Pattern and Sector - Mannar District

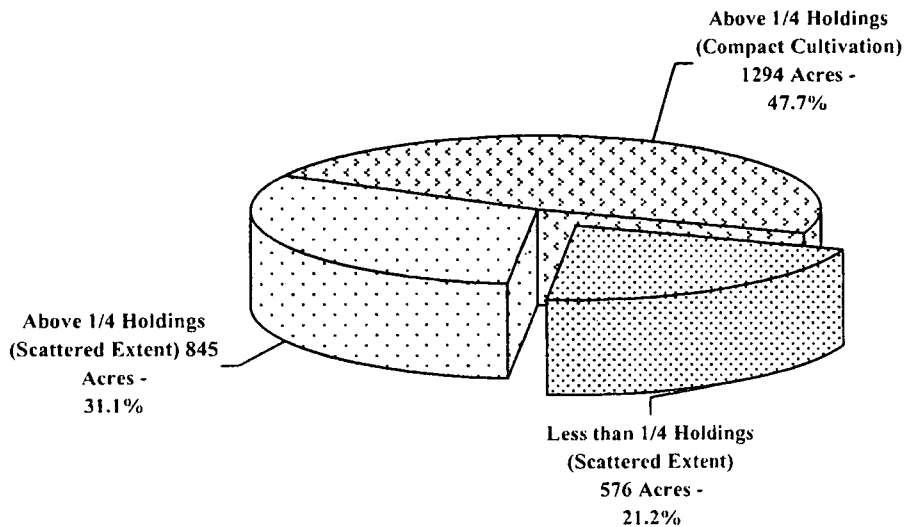


Chart 1

Distribution of Extent under Coconut by DS/AGA Division - Mannar District

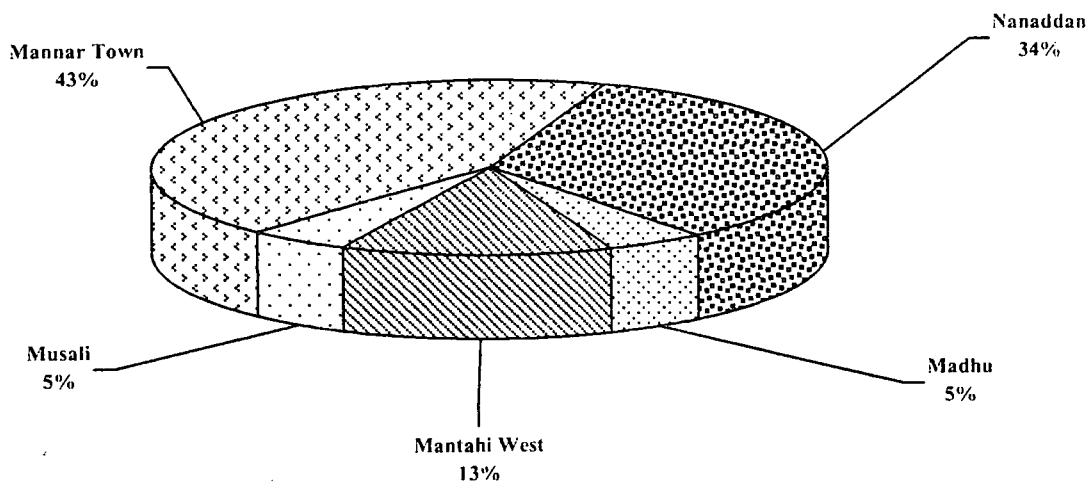


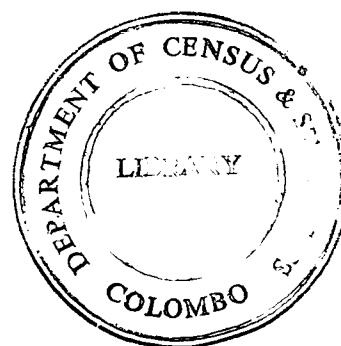
Chart 2

**Table 4.1 : Distribution of Coconut Cultivation According to Growing Pattern by GN Division
Madhu DS/AGA Division**

Small Holding Sector

GN Code	GN Division	Operated Area of Holdings (Acres)			No. of Scattered Trees in holdings less than 1/4 acre		Pattern of Cultivation in Holdings above 1/4 Acre of land						Estimated Extent Under Coconut (Acres)**	
		Less than 1/4 acre	Above 1/4 acre	Total Extent	Coconut	King Coconut	where Extent can be given (Acres)			where Extent cannot be given (Trees)				
							In- Production	Not yet in- Production	Total Extent	In- Production	Not yet in- Production	King- Coconut		
5	Palampiddy	4.8	369.6	374.4	633	-	-	-	-	-	-	-	-	10.5
10	Keerisuddan	0.6	41.5	42.1	6	-	-	-	-	-	-	-	-	0.1
15	Parasankulam	2.9	263.8	266.7	12	2	1.2	2.7	3.9	68	86	8	-	6.7
20	Vilathikulam	0.2	15.0	15.2	-	-	-	-	-	-	-	-	-	-
25	Kakkayankulam East	-	-	-	-	-	-	-	-	-	-	-	-	-
30	Kalmadu	-	2.0	2.0	-	-	-	-	-	-	-	-	-	-
35	Kakkayankulam West	-	-	-	-	-	-	-	-	-	-	-	-	-
40	Iranai-Ilupaikulam	0.6	209.0	209.6	4	-	-	-	-	113	1	-	-	2.0
45	Periya-Pandivirichchan East	5.3	316.5	321.8	55	22	-	-	-	-	-	-	-	0.9
50	Periya-Pandivirichchan West	0.1	425.3	425.4	-	-	25.7	18.9	44.6	1,390	956	47	-	83.7
55	Madhu	5.6	175.0	180.6	269	24	-	-	-	175	171	11	-	10.2
60	Maluwarayarkaddayadampan	-	25.0	25.0	-	-	-	-	-	-	-	-	-	-
65	Poomalamthan	-	-	-	-	-	-	-	-	-	-	-	-	-
70	Thekkam	-	-	-	-	-	-	-	-	-	-	-	-	-
75	Pannavedduvan	-	84.5	84.5	-	-	2.5	1.9	4.4	179	49	-	-	8.2
80	Periyamurippu	0.8	143.9	144.7	-	-	2.7	1.4	4.1	20	91	-	-	6.0
85	Matha Kiramam	-	227.1	227.1	-	-	-	-	-	3	1	-	-	0.1
DS/AGA Division Total		20.9	2,298.2	2,319.1	979	48	32.1	24.9	57.0	1,948	1,355	66	-	128.4

** Includes the estimated area covered by scattered coconut trees and excludes King coconut



**Table 4.2 : Distribution of Coconut Cultivation According to Growing Pattern by GN Division
Mannar Town DS/AGA Division**

Small Holding Sector

GN Code	GN Division	Operated Area of Holdings (Acres)			No. of Scattered Trees in holdings less than 1/4 acre		Pattern of Cultivation in Holdings above 1/4 Acre of land						Estimated Extent Under Coconut (Acres)**
		Less than 1/4 acre	Above 1/4 acre	Total Extent	Coconut	King Coconut	where Extent can be given (Acres)			where Extent cannot be given (Trees)			
							In-Production	Not yet in-Production	Total Extent	In-Production	Not yet in-Production	King-Coconut	
5	Talaimannar North	17.5	20.8	38.3	1,243	139	16.0	-	16.0	1,015	137	10	55.9
10	Talaimannar Pier West	1.7	4.0	5.7	46	1	1.5	-	1.5	105	-	7	4.0
15	Talaimannar Pier East	9.0	122.1	131.1	447	65	6.5	1.5	8.0	137	41	11	18.4
20	Talaimannar	12.4	51.3	63.7	439	16	0.5	-	0.5	-	55	-	8.7
25	Talaimannar South	12.6	48.0	60.6	417	70	22.5	-	22.5	900	112	34	46.3
30	Kaddukarakudiyirippu	7.7	411.6	419.3	263	-	6.8	4.8	11.6	169	146	5	21.2
35	Thulukudiyirippu	14.7	-	14.7	366	108	-	-	0.0	-	-	-	6.1
40	Pesalai South	48.7	1.7	50.4	1,601	147	0.1	-	0.1	18	20	5	27.4
45	Pesalai North	20.5	54.4	74.9	565	4	-	-	0.0	17	-	2	9.7
50	Pesalai West	43.2	183.9	227.1	939	18	19.1	1.7	20.8	380	114	-	44.7
55	Siruthoppu	13.8	113.0	126.8	768	4	9.0	-	9.0	155	139	18	26.7
60	Periyakerisal	2.3	123.6	125.9	13	-	35.5	11.8	47.3	1,065	210	4	68.8
65	Olaiethoduwal	5.5	150.7	156.2	145	23	22.6	9.0	31.6	612	543	133	53.3
70	Puthukudiyirippu	17.2	272.6	289.8	435	192	88.5	10.8	99.3	5	5	-	106.7
75	Erukkalampiddy West	2.8	2.0	4.8	130	25	1.0	1.0	2.0	60	60	-	6.2
80	Erukkalampiddy North	5.4	24.6	30.0	78	-	11.4	-	11.4	684	788	-	37.2
85	Erukkalampiddy East	25.7	-	25.7	1,111	297	-	-	-	-	-	-	18.5
90	Erukkalampiddy South	8.5	5.8	14.3	479	-	3.0	2.6	5.6	-	-	-	13.6
95	Erukkalampiddy Centre	4.6	13.6	18.2	173	21	7.3	-	7.3	455	42	-	18.5
100	Pallimunai East	12.9	0.3	13.2	342	38	0.3	-	0.3	30	7	-	6.6
105	Moor Street	19.4	-	19.4	390	370	-	-	-	-	-	-	6.5
110	Emil Nagar	18.2	50.1	68.3	471	59	10.1	40.0	50.1	-	-	25	58.0
115	Tharapuram East	2.5	38.0	40.5	88	22	22.3	-	22.3	14	-	-	24.0
120	Tharapuram West	8.2	56.6	64.8	311	53	49.8	-	49.8	-	-	68	55.0
125	Thoddaveli	18.1	16.2	34.3	857	55	4.8	-	4.8	30	-	-	19.6
130	Thalvupadu	28.9	54.1	83.0	1,612	192	27.4	4.9	32.3	495	357	36	73.4
135	Pattithodam	39.7	13.6	53.3	727	253	8.1	5.0	13.1	565	170	41	37.5
140	Eluthur	34.7	6.6	41.3	642	97	5.3	0.2	5.5	310	34	53	21.9
145	South Bar	35.1	-	35.1	1,749	5	-	-	-	-	-	-	29.2
150	Savatkaddu	12.6	-	12.6	1,023	-	-	-	-	-	-	-	17.0
155	Sinnakadai	21.0	-	21.0	589	200	-	-	-	-	-	-	9.8
160	Uppukkulam North	17.2	-	17.2	442	189	-	-	-	-	-	-	7.4
165	Pallimunai West	25.3	-	25.3	945	148	-	-	-	-	-	-	15.7
170	Uppukkulam South	9.7	-	9.7	339	54	-	-	-	-	-	-	5.6
175	Periyakadai	13.2	-	13.2	455	103	-	-	-	-	-	-	7.6
180	Pettah	16.1	12.6	28.7	421	89	-	-	-	3	-	-	7.1
185	Panankaddukottu West	11.9	-	11.9	442	9	-	-	-	-	-	-	7.4
190	Panankaddukottu East	9.0	-	9.0	318	-	-	-	-	-	-	-	5.3
195	Periyana vatkulam*	-	-	-	-	-	-	-	-	-	-	-	-
200	Thiruketheswaram*	-	-	-	-	-	-	-	-	-	-	-	-
205	Nagathalvu*	-	-	-	-	-	-	-	-	-	-	-	-
210	Neelasenai*	-	-	-	-	-	-	-	-	-	-	-	-
215	Mathoddam	4.6	256.1	260.7	141	-	4.1	-	4.1	269	8	-	11.1
220	Kallikaddaikadu	9.7	169.0	178.7	469	-	1.0	-	1.0	169	46	6	12.4
225	Vannamoddai*	-	-	-	-	-	-	-	-	-	-	-	-
230	Uyilankulam	2.6	436.3	438.9	60	2	7.0	8.5	15.5	547	551	21	34.8
235	Puthukkarnam	5.4	537.3	542.7	191	18	18.7	17.3	36.0	1,129	1,101	30	76.3
240	Uyitharasankulam	1.0	242.3	243.3	38	10	4.2	4.5	8.7	294	306	84	19.3
245	Parappankandal	4.3	120.1	124.4	150	4	4.2	2.3	6.5	299	179	11	17.0
DS/AGA Division Total		655.1	3,612.9	4,268.0	22,870	3,100	418.6	125.9	544.5	9,931	5,171	604	1,177.4

** Includes the estimated area covered by scattered coconut trees and excludes King coconut

**Table 4.3 : Distribution of Coconut Cultivation According to Growing Pattern by GN Division
Manthai West DS/AGA Division**

Small Holding Sector

GN Code	GN Division	Operated Area of Holdings (Acres)			No. of Scattered Trees in holdings less than 1/4 acre		Pattern of Cultivation in Holdings above 1/4 Acre of land							Estimated Extent Under Coconut (Acres)**
		Less than 1/4 acre	Above 1/4 acre	Total Extent	Coconut	King Coconut	where Extent can be given (Acres)			where Extent cannot be given (Trees)				
							In-Production	Not yet in-Production	Total Extent	In-Production	Not yet in-Production	King-Coconut		
5	Thevanpidy	12.4	14.5	26.9	465	-	-	-	-	-	-	-	-	7.8
10	Vellankulam	49.9	778.5	828.4	327	5	2.0	8.6	10.6	101	203	18	21.1	
15	Pali Aru	18.7	227.1	245.8	345	1	3.3	-	3.3	33	49	-	10.4	
20	Anthoniyarpuram	3.1	25.3	28.4	222	-	-	-	-	-	-	-	3.7	
25	Illupaikadavai	7.8	54.4	62.2	243	-	2.7	2.5	5.2	84	81	-	12.0	
30	Kalliyadi	2.7	149.4	152.1	32	-	-	-	-	411	410	2	14.2	
35	Aththimodda	1.9	136.3	138.2	24	-	-	-	-	66	37	-	2.1	
40	Koorai	2.1	99.3	101.4	19	-	-	-	-	20	31	-	1.2	
45	Periyamadhu East	1.5	106.8	108.3	29	-	1.0	-	1.0	190	36	-	5.2	
50	Periyamadhu West	2.0	83.0	85.0	24	-	6.0	-	6.0	212	15	-	10.2	
55	Kayanagar	3.0	44.3	47.3	69	2	1.0	-	1.0	35	24	-	3.1	
60	Pallamadhu	0.3	69.3	69.6	-	-	-	-	-	-	-	-	-	
65	Kovilkulam	3.5	304.0	307.5	117	-	-	-	-	127	166	2	6.8	
70	Vidathaltheevu North	2.5	9.8	12.3	51	-	-	-	-	4	2	-	1.0	
75	Vidathaltheevu West	4.7	1.6	6.3	57	-	-	-	-	-	-	-	1.0	
80	Vidathaltheevu Centre	1.5	-	1.5	-	-	-	-	-	-	-	-	-	
85	Vidathaltheevu East	3.2	25.7	28.9	1	-	-	-	-	-	-	-	-	
90	Papamodda	4.4	69.8	74.2	100	3	1.4	0.3	1.7	73	22	2	5.0	
95	Parapukadanthan West	-	111.5	111.5	-	-	0.9	1.4	2.3	77	126	2	5.7	
100	Parapukadanthan East	1.8	28.0	29.8	8	-	-	-	-	-	1	-	0.2	
105	Kannady	3.0	319.0	322.0	94	1	7.9	6.0	13.9	570	491	8	33.1	
110	Minnukkan	5.0	87.3	92.3	72	1	-	0.3	0.3	5	15	-	1.8	
115	Maligaitidal	1.4	63.4	64.8	36	-	1.3	-	1.3	19	-	-	2.2	
120	Veddayarmurrippu	0.2	8.5	8.7	-	-	5.4	0.8	6.2	331	60	6	12.7	
125	Nedunkandal	3.5	49.3	52.8	30	-	0.3	0.5	0.8	27	38	-	2.4	
130	Nedunkandal	1.1	64.5	65.6	13	-	1.2	0.6	1.8	76	55	-	4.2	
135	Karunkandal Vannakulam	1.4	190.2	191.6	49	3	5.2	6.8	12.0	316	486	66	26.2	
140	Alkaddiveli	3.6	194.3	197.9	129	1	10.3	4.1	14.4	659	448	14	35.0	
145	Andankulam	0.7	107.0	107.7	241	-	2.6	0.9	3.5	233	144	-	13.8	
150	Karunkandal	4.5	334.0	338.5	160	2	8.4	1.3	9.7	33	48	-	13.7	
155	Somapuri	0.2	102.8	103.0	20	-	3.4	0.6	4.0	251	173	-	11.4	
160	Palikuli	11.8	365.0	376.8	267	33	6.9	3.6	10.5	447	384	30	28.8	
165	Kaththamkulam	6.4	467.0	473.4	231	2	8.2	0.8	9.0	118	112	-	16.7	
170	Vaddhakandal	7.3	169.9	177.2	194	9	0.7	2.5	3.2	52	146	-	9.7	
175	Palayadipuththukulam	6.0	248.1	254.1	187	25	2.5	0.1	2.6	224	190	43	12.6	
180	Palalperumalkaddu	6.1	367.5	373.6	126	12	2.2	3.6	5.8	171	302	4	15.8	
DS/AGA Division Total		189.2	5,476.4	5,665.6	3,982	100	84.8	45.3	130.1	4,965	4,295	197	350.8	

** Includes the estimated area covered by scattered coconut trees and excludes King coconut

**Table 4.4 : Distribution of Coconut Cultivation According to Growing Pattern by GN Division
Musali DS/AGA Division**

Small Holding Sector

GN Code	GN Division	Operated Area of Holdings (Acres)			No. of Scattered Trees in holdings less than 1/4 acre		Pattern of Cultivation in Holdings above 1/4 Acre of land						Estimated Extent Under Coconut (Acres)**
		Less than 1/4 acre	Above 1/4 acre	Total Extent	Coconut	King Coconut	where Extent can be given (Acres)			where Extent cannot be given (Trees)			
							In-Production	Not yet in-Production	Total Extent	In-Production	Not yet in-Production	King-Coconut	
5	Arrippu West	23.4	89.4	112.8	1,168	24	28.3	4.3	32.6	212	150	3	58.1
10	Arrippu East	12.6	78.1	90.7	881	22	4.3	4.3	595	-	-	1	28.9
15	Mathaveli*	-	-	-	-	-	-	-	-	-	-	-	-
20	Poonochchikulam*	-	-	-	-	-	-	-	-	-	-	-	-
25	Pandaraveli*	-	-	-	-	-	-	-	-	-	-	-	-
30	Sinnapullachchi Potkerni	2.8	4.0	6.8	-	-	-	-	-	-	-	-	-
35	Periyapullachchi Potkerni*	-	-	-	-	-	-	-	-	-	-	-	-
40	Veppankulam*	-	-	-	-	-	-	-	-	-	-	-	-
45	Maruthamadhu	2.4	92.3	94.7	33	-	2.8	2.8	158	-	-	-	6.0
50	Ahathimurippu*	-	-	-	-	-	-	-	-	-	-	-	-
55	Puthuveli	-	-	-	-	-	-	-	-	-	-	-	-
60	Saveriyarpuram	5.3	24.8	30.1	173	-	19.3	3.0	22.3	791	160	-	41.0
65	Chilavathurai*	-	-	-	-	-	-	-	-	-	-	-	-
70	Kollankulam*	-	-	-	-	-	-	-	-	-	-	-	-
75	Kondachchi*	-	-	-	-	-	-	-	-	-	-	-	-
80	Kokkupadayan	6.6	21.0	27.6	42	-	0.5	0.5	30	-	-	-	1.7
85	Palaikuli	-	-	-	-	-	-	-	-	-	-	-	-
90	Karadikkulli*	-	-	-	-	-	-	-	-	-	-	-	-
95	Mullikulam*	-	-	-	-	-	-	-	-	-	-	-	-
100	Marichchukkadd*	-	-	-	-	-	-	-	-	-	-	-	-
DS/AGA Division Total		53.1	309.6	362.7	2,297	46	55.2	7.3	62.5	1,786	310	4	135.7

** Includes the estimated area covered by scattered coconut trees and excludes King coconut

**Table 4.5 : Distribution of Coconut Cultivation According to Growing Pattern by GN Division
Nanaddan DS/AGA Division**

Small Holding Sector

GN Code	GN Division	Operated Area of Holdings (Acres)			No. of Scattered Trees in holdings less than 1/4 acre		Pattern of Cultivation in Holdings above 1/4 Acre of land						Estimated Extent Under Coconut (Acres)**
		Less than 1/4 acre	Above 1/4 acre	Total Extent	Coconut	King Coconut	where Extent can be given (Acres)			where Extent cannot be given (Trees)			
							In-Production	Not yet in-Production	Total Extent	In-Production	Not yet in-Production	King-Coconut	
5	Vankalai North	16.3	12.4	28.7	720	6	0.8	-	0.8	29	-	-	13.3
10	Vankalai West	24.4	28.3	52.7	481	-	0.4	-	0.4	18	-	7	8.7
15	Vankalai East	20.2	34.6	54.8	806	-	1.1	-	1.1	82	-	2	15.9
20	Thomaspuri	8.3	7.3	15.6	96	5	-	-	-	-	-	-	1.6
25	Naruvilikkulam	7.1	387.8	394.9	563	-	15.7	26.0	41.7	892	1,485	80	90.7
30	Vanchiankulam	1.6	397.6	399.2	99	-	2.9	2.5	5.4	652	543	8	27.0
35	Ilanhadipiddy	-	445.4	445.4	-	-	11.3	4.0	15.3	669	262	8	30.8
40	Ilanthamoddai	2.0	56.3	58.3	28	-	1.3	0.3	1.6	89	22	1	3.9
45	Periyakaddaikadu	0.5	690.8	691.3	-	-	18.9	18.3	37.2	1,045	850	209	68.8
50	Aththikkuli	0.4	367.6	368.0	34	2	9.4	4.6	14.0	-	-	63	14.6
55	Kanchithalvu	-	39.5	39.5	-	-	1.1	-	1.1	78	-	-	2.4
60	Chemmantheevu	5.3	25.1	30.4	4	-	0.1	-	0.1	13	-	-	-
65	Murukan	3.1	397.2	400.3	103	-	9.2	2.1	11.3	494	162	-	23.9
70	Cheddiyar Kaddaiadampan	-	259.5	259.5	-	-	1.0	2.5	3.5	82	183	-	7.9
75	Iraddaikkulam	-	2.4	2.4	-	-	0.1	0.1	0.2	7	7	-	0.4
80	Chundikuli	1.2	129.4	130.6	35	5	4.3	7.0	11.3	205	299	33	20.3
85	Puthirarkandan	1.4	381.0	382.4	28	-	6.1	5.8	11.9	360	376	-	24.6
90	Razoolputhuveli	0.3	7.0	7.3	-	-	0.5	-	0.5	30	15	3	1.2
95	Nanaddan	-	417.2	417.2	-	-	23.3	10.2	33.5	1,186	563	62	62.6
100	Umanagari	3.1	418.8	421.9	118	7	2.5	3.0	5.5	437	662	150	25.8
105	Achchankulam	0.8	729.4	730.2	33	-	63.9	59.0	122.9	129	-	9	125.6
110	Moddaikadai	3.7	194.1	197.8	204	10	1.2	0.9	2.1	257	176	41	12.7
115	Rasamadhu	2.9	343.5	346.4	64	-	13.1	11.3	24.4	399	412	8	39.0
120	Pallankodai	-	199.8	199.8	-	-	8.3	11.6	19.9	467	714	115	39.6
125	Valkaipattankandal	20.9	766.1	787.0	736	25	9.7	24.3	34.0	470	1,547	20	79.9
130	Pontheevukandal	0.6	332.8	333.4	41	1	11.9	-	11.9	952	2	3	28.5
135	Kalimoddaipuliyankulam	0.5	283.8	284.3	1	5	3.8	9.2	13.0	237	642	6	27.7
140	Pariharikandal	1.5	488.9	490.4	26	-	11.0	17.8	28.8	182	127	-	34.4
145	Sirukkandal	3.6	268.9	272.5	26	-	5.7	3.0	8.7	90	117	-	12.6
150	Katkadanthakulam	4.3	696.6	700.9	134	-	13.3	16.8	30.1	801	986	65	62.1
155	Issaimalaithalvu	1.5	158.8	160.3	48	-	2.7	4.9	7.6	150	323	6	16.3
DS/AGA Division Total		135.5	8,967.9	9,103.4	4,428	66	254.6	245.2	499.8	10,502	10,475	899	922.8

** Includes the estimated area covered by scattered coconut trees and excludes King coconut

Estimation Procedure – Extent under Coconut**Extent In-production:**

Small Holding Sector: This consists of three components	
Item	Extent (acres)
<ul style="list-style-type: none"> • In the holdings more than ¼ acre where the extent under coconut can be reported in acres 	a1
<ul style="list-style-type: none"> • In the holdings more than ¼ acre where the extent under coconut cannot be determined but number of trees were reported. Then the extent has been computed dividing the number of trees by 60. (Assumed that the number of trees cultivated per acre is 60). 	a2
<ul style="list-style-type: none"> • In the holdings less than or equal to ¼ acre where the extent under coconut cannot be determined but number of trees were reported irrespective of status of production. Then the similar proportion of trees in-production and not yet in-production reported in the holdings more than ¼ in the same DS Division was used to estimate the number of trees in that category and divided by 60 to derive the extent. 	a3
Estate Sector: This consists of two components	
<ul style="list-style-type: none"> • In the estate sector holdings where the extent under coconut can be reported in acres 	a4
<ul style="list-style-type: none"> • In the estate holdings where the extent under coconut cannot be determined but number of trees were reported. Then the extent have been computed dividing the number of trees by 60. 	a5
<p>Likewise the total extent for a particular DS division was determined by taking the sum of above components i.e. (a1+a2+a3+a4+a5).</p> <p>Similarly the extent under not yet in-production was also computed.</p>	

Class Number	631.5
Accession Number	14864

60 Publications on Census of Agriculture 2002		
Available for Sale at the Sales Counter of the Department of Census and Statistics,		
No. 231 Galle Road, Colombo 4		
		Price Rs.
1.	Census of Agriculture – 2002 (Small Holding Sector) Preliminary Release No .1	65.00
2.	Census of Agriculture – 2002 (Small Holding Sector) Preliminary Release No .2	105.00
3.	Census of Agriculture – 2002 (Small Holding Sector) Preliminary Release No .3	125.00
	Census of Agriculture – 2002 (Small Holding Sector) – Preliminary District Reports	
4.	1. Colombo District	150.00
5.	2. Gampaha District	235.00
6.	3. Kalutara District	215.00
7.	4. Kandy District	165.00
8.	5. Matale District	185.00
9.	6. Nuwaraeliya District	125.00
10.	7. Galle District	180.00
11.	8. Matara District	175.00
12.	9. Hambantota District	135.00
13.	10. Jaffna District	105.00
14.	11. Mannar District	55.00
15.	12. Vavuniya District	85.00
16.	13. Mulativu District	90.00
17.	14. Killinochchi District	85.00
18.	15. Batticaloa District	155.00
19.	16. Ampara District	160.00
20.	17. Trincomalee District	125.00
21.	18. Kurunegala District	280.00
22.	19. Puttalam District	175.00
23.	20. Anuradhapura District	240.00
24.	21. Polonnaruwa District	115.00
25.	22. Badulla District	85.00
26.	23. Moneragala District	145.00
27.	24. Ratnapura District	180.00
28.	25. Kegalle District	160.00
29.	Outlook on Agriculture – Colombo District 2002	90.00
30.	Sri Lanka Census of Agriculture – 2002 Report on Estate Sector	140.00
31.	Status of Coconut Cultivation – Matara District	110.00
32.	Status of Coconut Cultivation – Colombo District	95.00
33.	Status of Coconut Cultivation – Polonnaruwa District	95.00
33.	Status of Coconut Cultivation – Moneragala District	95.00
34.	Status of Coconut Cultivation – Galle District	125.00
35.	Status of Coconut Cultivation – Hambantota District	50.00
36.	Status of Coconut Cultivation – Puttalam District	60.00
37.	Status of Coconut Cultivation – Kurunegala District	95.00
38.	Status of Coconut Cultivation – Gampaha District	70.00
39.	Status of Coconut Cultivation – Kegalle District	50.00
40.	Status of Coconut Cultivation - Badulla District	60.00