



**QUARTERLY REPORT OF THE
SRI LANKA LABOUR FORCE
SURVEY**

Quarterly Report – 2017

Second Quarter

**DEPARTMENT OF CENSUS & STATISTICS
MINISTRY OF NATIONAL POLICIES AND ECONOMIC
AFFAIRS**

ISBN 978 – 955 – 702 – 048 – 8

Preface

In the past, information on labour force characteristics, employment and unemployment etc. were collected through labour force and socio - economic surveys conducted at five yearly time intervals. However, the employment and unemployment data are required at very short intervals to monitor the programs made in the employment generating policies of the government. Therefore, to satisfy this need, the Department of Census and Statistics (DCS) designed a labour force survey on a quarterly basis, to measure the levels and trends of employment, unemployment and labour force in Sri Lanka on a continuous basis. This survey was commenced from the first quarter of 1990 and this report is the hundred and three in the series of quarterly reports published so far.

Current survey concepts and methods are very similar to those introduced at the beginning of the survey in 1990. However, some changes were made over the years to improve the accuracy and usefulness of the data. The significant revisions were made on the labour force survey questionnaire in 1996, 2006, 2013 and some small improvement were made in 2016. A reweighting is applied to labour force survey data series from 2011 onward, in order to adjust the population estimates with the calculated population at the 2012 Census of Population and Housing.

For the 2017 survey Computer-assisted personal interviewing (CAPI) method is introduced to collect survey data however in the 1st quarter 2017 paper questionnaire was also used until the CAPI is established fully for the data collection.

The field work of the survey for the second quarter 2017 was done in April, May and June in year 2017. This survey covered the whole country. A nationally representative annual sample of about 25,750 housing units have been selected for the survey in 2017. This report is based on a quarterly sample of 6,440 housing units.

*Dr. A.J. Satharasinghe
Director General of Census & Statistics*

*Department of Census & Statistics,
"Sankhyana Mandiraya",
306/71,
Polduwa Road,
Baththaramulla*

15.11.2017.

Acknowledgements

This report is hundred and three in the series of the Quarterly Labour Force Survey which was commenced from the first quarter of 1990 and is being continued by the Department of Census and Statistics.

Planning and execution of the survey was done by the staff of the Sample Surveys Division under the guidance of Mr. D.G.S.G. Munasinghe, Additional Director General (Statistics) and Mrs. K.M.D.S.D. Karunaratne, Director (Statistics) and under the direction of Mr. M.D. Sunil Senanayake, Deputy Director, Sample Surveys Division.

The survey activities were organized and supervised by Mrs. W.A.C.Wijebandara, Mr. K.S.R.L.Senadeera, Mrs. M.D.D.D.Deepawansa, Mrs. C.Jayawickrama, Mr. A.K.D.C.N.S.Karunarithna, Mr. K.Weerasiri, Mrs. U.S.Dilrukshi, Mr. M.L.K.P.Kumara, Mrs. M.W.L.C.M. Chandrarathne, Mrs. P.D.Nanayakkara, Ms.R.P.M.Subhashini, Statisticians & Senior Statistician, of the Sample Surveys Division.

The computer data processing and final tabulations were done by Mr. A.M.A.E.Atapattu, Statistical Officer and Mrs. A.N. Ekanayake, Statistical Assistant of the Sample Surveys Division, under the supervision of Mrs. W.A.C.Wijebandara, Statistician. The Statistical Officers, Statistical Assistants, Information and Communication Technology Assistants, Data Entry Officers/Coding Clerks and Development Officers (iii) of the Sample Survey Division are acknowledged for their valuable contribution during the whole survey process.

The Information & Communication Technology Division, under the direction of Mrs. I.A.M. Fernando, Additional Director General (ICT) and under the supervision of Mr. P.M.R.Fernando, Director (ICT) and Mr. W.H.P.N. Weerasiri Director (ICT), were responsible for the survey data entry and preparation of data entry and computer edits programmes. Data entry was decentralized and manual editing, coding & data entry were done by responsible officers at district secretariats in all the districts. Developing of sample selection programme and its related computer software was done by Mr. K.M.R. Wickramasinghe, Deputy Director (ICT).

This publication was organized and prepared by Mrs. W.A.C.Wijebandara and A.K.D.C.N.S.Karunarithna, Statisticians, Sample Surveys Division, assisted by Mr. A.M.A.E.Atapattu, Statistical Officer and Mrs. Asanthi Ekanayaka, Statistical Assistant of Sample Surveys Division.

District staff of the Department who worked on the survey deserves a special word of thanks. The Deputy Directors/ Senior Statisticians/ Statisticians supervised the survey and field Statistical Officers, worked hard at the data collection stage, to make this survey a success. Printing of the report was done by the staff of Printing Division, under the supervision of Mr. M.J.M. Fernando, Statistician.

Finally, I wish to express my appreciation to all the respondents of the survey for their valuable cooperation.

Selected Labour Force Indicators ...

Indicator	Year								
	2012	2013	2014	2015	2016	2015Q2	2016Q2	2017Q1	2017Q2
Labour force participation rate									
By Gender									
Total	52.5	53.7	53.2	53.8	53.8	54.2	53.3	54.7	53.9
Male	74.9	74.9	74.6	74.7	75.1	74.8	74.9	75.1	74.6
Female	32.9	35.4	34.6	35.9	35.9	36.6	35.1	37.6	35.9
By residential sector									
Total	52.5	53.7	53.2	53.8	53.8	54.2	53.3	54.7	53.9
Urban	48.3	47.7	48.7	48.6	49.8	49.3	49.6	51.5	48.5
Rural	53.4	54.9	54.1	54.8	54.6	55.2	54.0	55.4	55.1
Unemployment Rate									
By Gender									
Total	4.0	4.4	4.3	4.7	4.4	4.5	4.6	4.1	4.5
Male	2.8	3.2	3.1	3.0	2.9	3.1	3.1	2.7	3.0
Female	6.3	6.6	6.5	7.6	7.0	7.1	7.3	6.5	7.1
By selected age Group (Year)									
20 – 29	11.3	13.1	13.6	14.2	14.2	14.6	14.4	12.5	14.6
20 – 24	16.7	19.3	19.9	19.7	19.9	21.1	21.2	17.4	18.4
25 – 29	6.6	7.6	8.2	9.4	9.2	9.2	8.3	8.0	11.3
By selected educational level									
GCE A/L and above									
Total	7.6	8.7	8.2	9.2	8.3	8.5	8.6	7.8	8.2
Male	4.6	5.7	5.4	4.7	4.7	3.8	4.6	4.9	5.0
Female	10.8	11.8	11.1	13.5	11.9	12.9	12.5	10.8	11.8
Employed population									
By Gender									
Total	7,488,704	7,681,279	7,700,489	7,830,976	7,947,683	7,887,850	7,815,280	8,230,207	8,138,728
Male	5,046,057	5,024,340	5,075,426	5,097,798	5,149,948	5,099,783	5,100,734	5,235,046	5,315,916
Female	2,442,647	2,656,938	2,625,064	2,733,178	2,797,735	2,788,067	2,714,545	2,995,161	2,822,812
By industry (Percentage)									
Total	7,488,704	7,681,279	7,700,489	7,830,976	7,947,683	7,887,850	7,815,280	8,230,207	8,138,728
%	100.0	100.0	100.0	100.0	100.0	100.0	100.0	100.0	100
Agriculture	2,333,342	2,321,215	2,222,859	2,244,547	2,153,874	2,275,821	1,961,818	2,221,761	2,114,336
%	31.2	30.2	28.9	28.7	27.1	28.9	25.1	27.0	26.0
Industry	1,940,615	1,996,730	2,027,426	2,018,171	2,097,503	2,013,896	2,121,365	2,306,398	2,301,377
%	25.9	26.0	26.3	25.8	26.4	25.5	27.1	28.0	28.3
Services	3,214,746	3,363,334	3,450,205	3,568,259	3,696,306	3,598,133	3,732,097	3,702,049	3,723,015
%	42.9	43.8	44.8	45.6	46.5	45.6	47.8	45	45.7
By no. of hours worked per week (percentage)									
Total	100.0	100.0	100.0	100.0	100.0	100.0	100.0	100.0	100.0
0#	4.5	5.2	5.2	5.5	4.4	10.3	5.7	3.5	6.6
1 – 9	1.1	1.8	1.3	1.7	1.5	2.2	1.6	1.6	1.5
10 – 39	26.1	27.5	27.6	27.2	26.2	30.7	26.0	26.7	27.3
40 & above	68.3	65.5	65.9	65.7	67.9	56.7	66.6	68.1	64.6

has a job but not at work during the reference week

Note : Working age population considered as (age 15 & over population)

Introduction

Highlights

- Labour force participation rate is 53.9% for the Second Quarter of 2017.
- Unemployment rate for the survey period is 4.5%.

Inside

Labour Force	1
Employment	2
Unemployment	3
Selected Labour Force Indicators	4

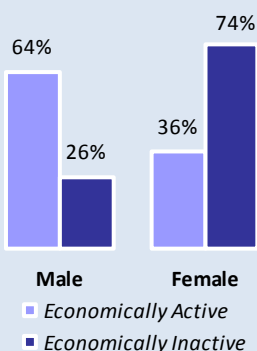


Figure 1: Distribution of Economically active/Inactive population - Second quarter - 2017

Sri Lanka Labour Force Survey (LFS) is designed to measure the levels and trends of employment, unemployment and labour force in Sri Lanka. LFS has been conducted quarterly, since the first quarter of 1990.

This bulletin contains labour force, employment and unemployment statistics for the first quarter 2017 based on the data collected in April, May and June covering the whole country.

Labour Force (Economically Active Population)

Table 1: Economically active population by gender and sector - Second Quarter 2017

Sector	Economically active population					
	Total	%	Male	%	Female	%
Sri Lanka	8,519,322	100.0	5,482,206	64.4	3,037,116	35.6
Urban	1,373,913	100.0	938,927	68.3	434,986	31.7
Rural	6,710,241	100.0	4,295,015	64.0	2,415,226	36.0
Estate	435,168	100.0	248,264	57.1	186,904	42.9

Table 2: Economically inactive population by gender and sector - Second Quarter 2017

Sector	Economically inactive population					
	Total	%	Male	%	Female	%
Sri Lanka	7,294,468	100.0	1,867,257	25.6	5,427,212	74.4
Urban	1,460,251	100.0	369,817	25.3	1,090,433	74.7
Rural	5,583,508	100.0	1,423,314	25.5	4,160,194	74.5
Estate	250,710	100.0	74,125	29.6	176,585	70.4

Table 3: LFPR by gender and year

Year	Total	Male	Female
2011	52.9	74.0	34.3
2012	52.5	74.9	32.9
2013	53.7	74.9	35.4
2014	53.2	74.6	34.6
2015	53.8	74.7	35.9
2016	54.1	75.1	36.0
2015 Q2	54.2	74.8	36.6
2016 Q2	53.3	74.9	35.1
2017 Q1	54.7	75.1	37.6
2017 Q2	53.9	74.6	35.9

Table 3 provides the information on LFPRs since year 2011. Referring the Table 3, It is important to note that, male participation to the labour force is always higher than that of females.

Considering the Table 4, the distribution of LFPR by age group and by gender depicts high male participation compared to female in all age groups. The highest participation rate for male is reported from age group 35-44 years (97.0%), while that for female is reported from 45-49 age group (54.1%).

Labour Force

This is the currently economically active population. Which is the number of persons (age 15 years & above) who are employed or unemployed during the reference week.

Labour force participation rate (LFPR)

Labour force population expressed as a percentage of the population, age 15 years and over.

According to the Table 1, the estimated economically active population is about 8.5 million in the second quarter 2017. Of which 64.4 percent are males and 35.6 percent are females. Out of the economically inactive population 25.6 percent are males and 74.4 percent are females (Table 2).

Table 4: LFPR by age group and gender - Second Quarter 2017

Age group (Years)	Total	Male	Female
Sri Lanka	53.9	74.6	35.9
15 - 19	13.3	18.8	8.0
20 - 24	57.1	73.5	42.0
25 - 29	67.7	92.8	47.5
30 - 34	67.8	94.8	43.1
35 - 39	68.1	97.0	42.8
40 - 44	70.1	97.0	48.3
45 - 49	73.2	95.4	54.1
50 - 54	68.8	93.6	48.9
55 - 59	60.8	84.1	39.1
60+	31.0	48.4	16.5

Definition of 'Employed'

Persons, who worked at least one hour during the reference period, as paid employees, employers, own account workers or contributing family workers are said to be employed. This also includes persons with a job but not at work during the reference period.

Reference Period :

Previous week of the survey week

The Employment Rate

The proportion of employed population to the total labour force.

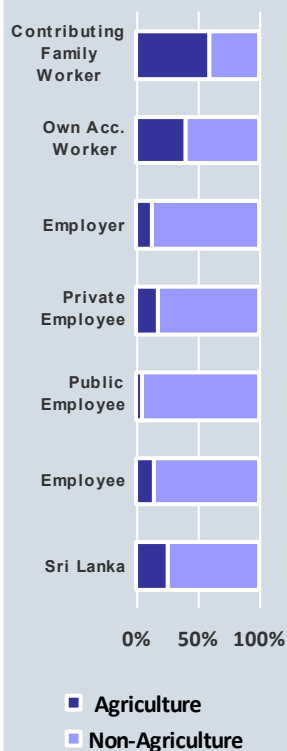


Figure 2 : Distribution of employed population by employment status and Agriculture/Non-Agriculture sector - Second quarter 2017

Employment ...

Table 5 : Distribution of Employed population by main industry
(Second Quarter 2016 – Second quarter 2017)

Quarter	Sri Lanka	Major Industry Group		
		Agriculture	Industries	Services
2016 Q2 (No.)	7,815,280	1,961,818	2,121,365	3,732,097
(%)	100.0	25.1	27.1	47.8
2016 Q3 (No.)	7,999,821	2,168,982	2,144,808	3,686,032
(%)	100.0	27.1	26.8	46.1
2016 Q4 (No.)	8,006,700	2,209,976	2,055,386	3,741,339
(%)	100.0	27.6	25.7	46.7
2017 Q1 (No.)	8,230,207	2,221,761	2,306,398	3,702,049
(%)	100.0	27.0	28.0	45.0
2017 Q2 (No.)	8,138,728	2,114,336	2,301,377	3,723,015
(%)	100.0	26.0	28.3	45.7

Table 5 shows the percentage distribution of employed population by main industry from second quarter 2016 to second quarter 2017. During second quarter of 2017, the total number of employed persons in Sri Lanka is estimated as about 8.1 million. Of which, about 45.7 percent engaged in Service sector, 28.3 percent in Industries sector and 26.0 percent in Agriculture sector.

Table 6 : Distribution of employed population by employment status in Agriculture and Non-Agriculture sectors – Second quarter 2017

Employment Status	Sri Lanka		Sector			
			Agriculture		Non-Agriculture	
	No.	%	No.	%	No.	%
Sri Lanka	8,138,728	100.0	2,114,336	26.0	6,024,392	74.0
Employee	4,675,764	100.0	665,042	14.2	4,010,721	85.8
Public	1,162,738	100.0	54,816	4.7	1,107,921	95.3
Private	3,513,026	100.0	610,226	17.4	2,902,800	82.6
Employer	237,563	100.0	29,291	12.3	208,272	87.7
Own Account Worker	2,601,122	100.0	1,047,148	40.3	1,553,973	59.7
Contributing Family Worker	624,280	100.0	372,854	59.7	251,425	40.3

Table 7 : Percentage distribution of Employed population by main industry & gender – Second quarter 2017

Major Industry Group	Sri Lanka	Gender	
		Male	Female
Sri Lanka	100.0	100.0	100.0
Agriculture	26.0	24.5	28.8
Industry	28.3	28.7	27.4
Services	45.7	46.7	43.9

Main industry categories and sub sectors

Agriculture

1. Agriculture Forestry and Fishery (A)

Industries

1. Mining & Quarrying (B)
2. Manufacturing (C)
3. Construction, Electricity, gas, steam and air conditioning supply, Water supply, sewerage, waste management and remediation activities (D, E,F)

Services

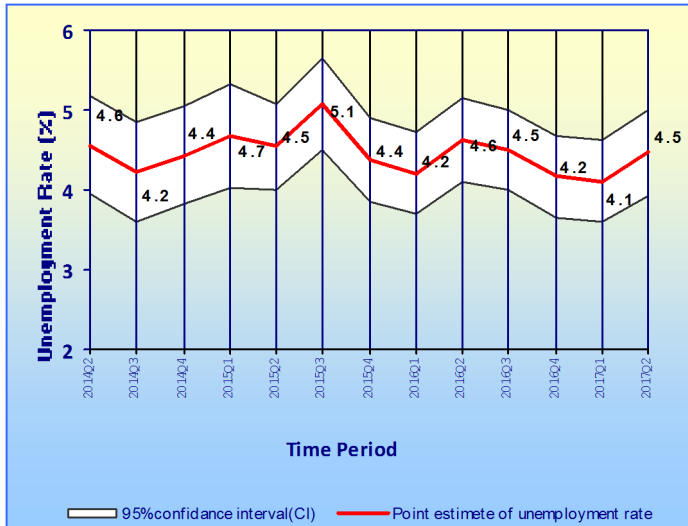
1. Wholesale and retail trade, repair of motor vehicles and motor cycles (G)
2. Transportation and storage (H)
3. Accommodation and food services activities (I)
4. Information and communication (J)
5. Financial and insurance activities (K)
6. Professional, scientific and technical activities (M)
7. Administrative and support service activities (N)
8. Public administration and defense compulsory social security (O)
9. Education (P)
10. Human health and social work activities (Q)
11. Other service activities (S)
12. Activities of households as employers; undifferentiated goods and services - producing activities of households for own use (T)
13. Real estate activities (L) Arts, entertainment and recreation (R) Activities of extra territorial organizations & bodies (U)

As could be seen from the Figure 2 & Table 6 contributing family workers are highly concentrated in Agriculture sector.

Table 7 depicts the percentage distribution of male and female employed population by main industries. Highest employment share is in service sector and this is true for both male & female, while the lowest shares are for agriculture sector. Among employed females 28.8 percent is in agriculture sector while this share is 24.5 percent for males.

Unemployment ...

Figure 3: Unemployment rates and its 95% confidence intervals (2014Q2 - 2017Q2)



¹Sampling error : When a sample, rather than the entire population, is surveyed, estimates differ from the true values of population they represent. This difference, or sampling error, occurs by chance, and its variability is measured by the sampling error of the estimate.

For more details, please refer the explanatory note given under the labour force link in the DCS website; www.statistics.gov.lk

Table 8: Number of Unemployment and Unemployment rate by age group and gender – Second quarter 2017

Age group (Years)	Unemployment Rate (%)			
	Sri Lanka	Sri Lanka	Gender	
	Number	Unp. rate	Male	Female
Sri Lanka	380,594	4.5	3.0	7.1
15–24	190,685	20.0	14.8	29.1
25–29	96,763	11.3	7.7	17.0
Over 30	93,146	1.4	0.8	2.4

The survey results further revealed that the unemployment among females is higher than that of males, in all age groups. Youth and female unemployment contribute more to the overall unemployment of the country.

Table 9: Number of Unemployment and Unemployment rate by level of education – Second quarter 2017

Level of Education	Unemployment Rate (%)			
	Sri Lanka	Sri Lanka	Gender	
	Number	Unp. rate	Male	Female
Sri Lanka	380,594	4.5	3.0	7.1
Below GCE O/L	144,924	2.7	2.0	4.3
GCE O/L	87,161	6.0	4.9	8.3
GCE A/L & above	148,509	8.2	5.0	11.8

The highest unemployment rate is reported from the G.C.E (A/L) and above group which is about 8.2 percent. Corresponding percentages are 5.0 percent and 11.8 percent for males and females respectively. Female unemployment rates are higher than those of males in all levels of education.

This further shows that the problem of unemployment is more acute in the case of educated females than educated males, which was observed consistently over the results of previous survey rounds as well.

The number of unemployed persons is estimated as 380,594 during the second quarter 2017. The unemployment rate for the first quarter 2017 is 4.5 percent.

As shown in Figure 3, it is very important to note that, when sampling error¹ is considered there are no statistically significant drops/increases of unemployment rates reported in different time periods starting from Second quarter 2014 to Second quarter 2017.

As can be seen from Table 8, overall unemployment rate reported for female is 7.1 percent and it is 3.0 percent for male. Youth unemployment rate (age 15 – 24 years) corresponding to the second quarter 2017 is 20.0 percent and that reports the highest unemployment rate among all other age groups. Further rates for both males and females are 14.8 and 29.1 percent respectively for age group 15–24.

Definition of 'Unemployed'

Persons available and/or looking for work, and who did not work and taken steps to find a job during last four weeks and ready to accept a job given a work opportunity within next two weeks are said to be unemployed.

The Unemployment Rate

The proportion of unemployed population to the total labour force.

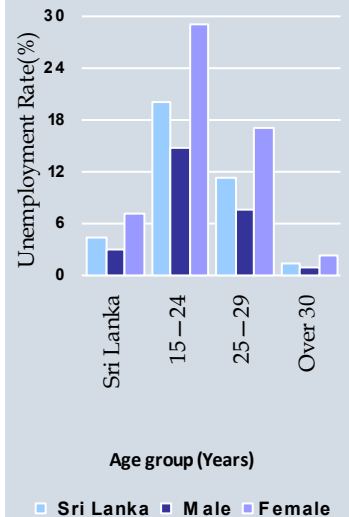


Figure 3: Unemployment rate by age group and gender – Second quarter 2017

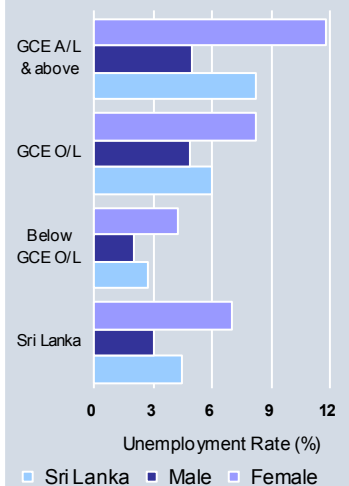


Figure 4: Unemployment rate by level of education and gender – Second quarter 2017

**TABLE 1 - HISTORICAL TABLE OF LABOUR FORCE STATUS (CURRENT) OF THE HOUSEHOLD
POPULATION, 15 YEARS OF AGE AND OVER - BOTH SEXES**

YEAR	HOUSEHOLD POPULATION (15 YEARS & OVER)	NATIONAL LEVEL DATA						NOT IN LABOUR FORCE NUMBER
		TOTAL LABOUR FORCE	LABOUR FORCE PARTICI: RATE(%)	LABOUR FORCE		UNEMPLOYED		
				EMPLOYED NUMBER	RATE (% TO TOTAL LABOUR FORCE)	NUMBER	RATE (% TO TOTAL LABOUR FORCE)	
2009 ¹	14,876,264	8,051,089	54.1	7,579,835	94.1	471,254	5.9	6,825,175
2010 ¹	15,166,285	8,096,477	53.4	7,696,142	95.1	400,335	4.9	7,069,808
2011 ²	14,975,989	7,926,445	52.9	7,591,591	95.8	334,854	4.2	7,049,544
2012 ²	14,857,578	7,798,407	52.5	7,488,704	96.0	309,703	4.0	7,059,171
2013 ²	14,959,065	8,033,804	53.7	7,681,279	95.6	352,526	4.4	6,925,260
2014 ²	15,134,484	8,048,884	53.2	7,700,489	95.7	348,395	4.3	7,085,600
2015 ²	15,281,945	8,214,473	53.8	7,830,976	95.3	383,496	4.7	7,067,473
2016 ²	15,448,679	8,310,682	53.8	7,947,683	95.6	362,999	4.4	7,137,997
2016Q2 ²	15,383,921	8,193,266	53.3	7,815,280	95.4	377,987	4.6	7,190,655
2017Q1 ²	15,684,110	8,583,082	54.7	8,230,207	95.9	352,875	4.1	7,101,029
2017Q2 ²	15,813,790	8,519,322	53.9	8,138,728	95.5	380,594	4.5	7,294,468

¹ - Excluding Northern province

² - All the districts are included and the tables consist with reweighted estimates.

**TABLE 1A - HISTORICAL TABLE OF LABOUR FORCE STATUS (CURRENT) OF THE HOUSEHOLD
POPULATION, 15 YEARS OF AGE AND OVER - MALE**

YEAR	HOUSEHOLD	LABOUR FORCE						NOT IN
	POPULATION	TOTAL	LABOUR	EMPLOYED		UNEMPLOYED		LABOUR
	(15 YEARS	LABOUR	FORCE	NUMBER	RATE	NUMBER	RATE	FORCE
	& OVER)	FORCE	PARTICI:	(% TO TOTAL		(% TO TOTAL		NUMBER
			RATE(%)	LABOUR FORCE)		LABOUR FORCE)		
2009 ¹	6,925,821	5,173,106	74.7	4,949,825	95.7	223,281	4.3	1,752,715
2010 ¹	7,078,246	5,310,872	75.0	5,125,763	96.5	185,108	3.5	1,767,374
2011 ²	7,027,780	5,203,267	74.0	5,061,214	97.3	142,053	2.7	1,824,513
2012 ²	6,932,520	5,192,686	74.9	5,046,057	97.2	146,629	2.8	1,739,835
2013 ²	6,926,750	5,187,873	74.9	5,024,341	96.8	163,533	3.2	1,738,877
2014 ²	7,025,780	5,240,034	74.6	5,075,425	96.9	164,609	3.1	1,785,746
2015 ²	7,036,944	5,255,593	74.7	5,097,798	97.0	157,794	3.0	1,781,352
2016 ²	7,064,736	5,303,502	75.1	5,149,948	97.1	153,554	2.9	1,761,234
2016Q2 ²	7,030,644	5,264,919	74.9	5,100,734	96.9	164,185	3.1	1,765,725
2017Q1 ²	7,166,309	5,381,244	75.1	5,235,046	97.3	146,198	2.7	1,785,065
2017Q2 ²	7,349,462	5,482,206	74.6	5,315,916	97.0	166,290	3.0	1,867,257

**TABLE 1B - HISTORICAL TABLE OF LABOUR FORCE STATUS (CURRENT) OF THE HOUSEHOLD
POPULATION, 15 YEARS OF AGE AND OVER - FEMALE**

YEAR	HOUSEHOLD	LABOUR FORCE						NOT IN
	POPULATION	TOTAL	LABOUR	EMPLOYED		UNEMPLOYED		LABOUR
	(15 YEARS	LABOUR	FORCE	NUMBER	RATE	NUMBER	RATE	FORCE
	& OVER)	FORCE	PARTICI:	(% TO TOTAL		(% TO TOTAL		NUMBER
			RATE(%)	LABOUR FORCE)		LABOUR FORCE)		
2009 ¹	7,950,443	2,877,983	36.2	2,630,010	91.4	247,973	8.6	5,072,460
2010 ¹	8,088,039	2,785,605	34.4	2,570,379	92.3	215,226	7.7	5,302,434
2011 ²	7,948,209	2,723,178	34.3	2,530,377	92.9	192,801	7.1	5,225,031
2012 ²	7,925,058	2,605,721	32.9	2,442,647	93.7	163,074	6.3	5,319,336
2013 ²	8,032,315	2,845,931	35.4	2,656,938	93.4	188,993	6.6	5,186,383
2014 ²	8,108,704	2,808,850	34.6	2,625,064	93.5	183,786	6.5	5,299,854
2015 ²	8,245,001	2,958,880	35.9	2,733,178	92.4	225,702	7.6	5,286,121
2016 ²	8,383,943	3,007,180	35.9	2,797,735	93.0	209,445	7.0	5,376,764
2016Q2 ²	8,353,277	2,928,347	35.1	2,714,545	92.7	213,802	7.3	5,424,930
2017Q1 ²	8,517,801	3,201,838	37.6	2,995,161	93.5	206,677	6.5	5,315,964
2017Q2 ²	8,464,328	3,037,116	35.9	2,822,812	92.9	214,304	7.1	5,427,212

¹ - Excluding Northern province

² - All the districts are included and the tables consist with reweighted estimates.

TABLE 2 - LABOUR FORCE STATUS (CURRENT) OF THE HOUSEHOLD POPULATION 15 YEARS OF AGE AND OVER, BY AGE - BOTH SEXES

AGE	HOUSEHOLD POP: (15 YEARS & OVER)	LABOUR FORCE						NOT IN LABOUR FORCE NUMBER
		TOTAL LABOUR FORCE	LABOUR FORCE PARTICI: RATE(%)	EMPLOYED		UNEMPLOYED		
				NUMBER	RATE (% TO TOTAL LABOUR FORCE)	NUMBER	RATE (% TO TOTAL LABOUR FORCE)	
ALL AGES	15,813,790	8,519,322	53.9	8,138,728	95.5	380,594	4.5	7,294,468
15 - 19 YRS	1,591,110	211,802	13.3	157,560	74.4	54,242	25.6	1,379,308
20 - 24 YRS	1,296,098	740,417	57.1	603,974	81.6	136,443	18.4	555,682
25 - 29 YRS	1,260,550	853,557	67.7	756,794	88.7	96,763	11.3	406,993
30 - 39 YRS	2,979,075	2,025,797	68.0	1,976,136	97.5	49,661	2.5	953,278
40 + YRS	8,686,957	4,687,750	54.0	4,644,264	99.1	43,485	0.9	3,999,208

TABLE 2A - LABOUR FORCE STATUS (CURRENT) OF THE HOUSEHOLD POPULATION 15 YEARS OF AGE AND OVER, BY AGE - MALE

AGE	HOUSEHOLD POP: (15 YEARS & OVER)	LABOUR FORCE						NOT IN LABOUR FORCE NUMBER
		TOTAL LABOUR FORCE	LABOUR FORCE PARTICI: RATE(%)	EMPLOYED		UNEMPLOYED		
				NUMBER	RATE (% TO TOTAL LABOUR FORCE)	NUMBER	RATE (% TO TOTAL LABOUR FORCE)	
ALL AGES	7,349,462	5,482,206	74.6	5,315,916	97.0	166,290	3.0	1,867,257
15 - 19 YRS	783,377	147,332	18.8	116,548	79.1	30,784	20.9	636,045
20 - 24 YRS	623,480	458,227	73.5	399,308	87.1	58,919	12.9	165,253
25 - 29 YRS	562,075	521,566	92.8	481,352	92.3	40,214	7.7	40,509
30 - 39 YRS	1,408,140	1,350,702	95.9	1,329,542	98.4	21,160	1.6	57,438
40 + YRS	3,972,391	3,004,378	75.6	2,989,165	99.5	15,213	0.5	968,013

TABLE 2B - LABOUR FORCE STATUS (CURRENT) OF THE HOUSEHOLD POPULATION 15 YEARS OF AGE AND OVER, BY AGE - FEMALE

AGE	HOUSEHOLD POP: (15 YEARS & OVER)	LABOUR FORCE						NOT IN LABOUR FORCE NUMBER
		TOTAL LABOUR FORCE	LABOUR FORCE PARTICI: RATE(%)	EMPLOYED		UNEMPLOYED		
				NUMBER	RATE (% TO TOTAL LABOUR FORCE)	NUMBER	RATE (% TO TOTAL LABOUR FORCE)	
ALL AGES	8,464,328	3,037,116	35.9	2,822,812	92.9	214,304	7.1	5,427,212
15 - 19 YRS	807,733	64,470	8.0	41,011	63.6	23,458	36.4	743,263
20 - 24 YRS	672,618	282,189	42.0	204,666	72.5	77,524	27.5	390,429
25 - 29 YRS	698,476	331,991	47.5	275,442	83.0	56,549	17.0	366,485
30 - 39 YRS	1,570,935	675,095	43.0	646,594	95.8	28,501	4.2	895,840
40 + YRS	4,714,567	1,683,371	35.7	1,655,099	98.3	28,272	1.7	3,031,195

These figures are to be treated with caution as the corresponding CV (Coefficient of variation)

**TABLE 3 - HISTORICAL TABLE OF CURRENTLY EMPLOYED PERSONS BY AGE GROUPS
(PERCENTAGE) - BOTH SEXES**

Year	All Ages	Age Groups				
		15 - 19 YRS	20 - 24 YRS	25 - 29 YRS	30 - 39 YRS	40+ YRS
2009 ¹	100.0	3.4	8.6	11.5	24.4	52.1
2010 ¹	100.0	3.0	8.5	10.9	24.0	53.5
2011 ²	100.0	3.1	8.6	11.0	24.3	53.0
2012 ²	100.0	2.5	8.3	11.0	25.2	53.0
2013 ²	100.0	2.7	7.9	10.1	24.8	54.5
2014 ²	100.0	2.4	7.2	9.7	25.2	55.5
2015 ²	100.0	2.2	7.5	9.7	24.5	56.1
2016 ²	100.0	2.0	7.3	9.5	24.2	57.0
2016Q2 ²	100.0	2.1	7.6	9.8	24.5	56.0
2017Q1 ²	100.0	2.2	7.5	9.0	23.4	57.8
2017Q2 ²	100.0	1.9	7.4	9.3	24.3	57.1

**TABLE 3A - HISTORICAL TABLE OF CURRENTLY EMPLOYED PERSONS BY AGE GROUPS
(PERCENTAGE) - MALE**

Year	All Ages	Age Groups				
		15 - 19 YRS	20 - 24 YRS	25 - 29 YRS	30 - 39 YRS	40+ YRS
2009 ¹	100.0	3.5	8.4	11.8	24.3	52.0
2010 ¹	100.0	3.1	8.2	11.3	24.1	53.3
2011 ²	100.0	3.2	8.7	11.3	24.3	52.5
2012 ²	100.0	2.7	8.3	11.2	25.2	52.6
2013 ²	100.0	2.9	7.8	10.2	25.0	54.1
2014 ²	100.0	2.5	7.3	9.6	25.4	55.2
2015 ²	100.0	2.3	7.3	9.7	24.4	56.2
2016 ²	100.0	2.2	7.3	9.4	24.2	56.9
2016Q2 ²	100.0	2.5	7.7	9.4	24.7	55.7
2017Q1 ²	100.0	2.4	7.2	9.6	23.0	57.8
2017Q2 ²	100.0	2.2	7.5	9.1	25.0	56.2

**TABLE 3B - HISTORICAL TABLE OF CURRENTLY EMPLOYED PERSONS BY AGE GROUPS
(PERCENTAGE) - FEMALE**

Year	All Ages	Age Groups				
		15 - 19 YRS	20 - 24 YRS	25 - 29 YRS	30 - 39 YRS	40+ YRS
2009 ¹	100.0	3.3	8.9	11.0	24.6	52.2
2010 ¹	100.0	2.9	9.2	10.0	23.9	54.0
2011 ²	100.0	2.8	8.5	10.3	24.4	53.9
2012 ²	100.0	2.2	8.4	10.5	25.1	53.8
2013 ²	100.0	2.4	8.0	10.0	24.3	55.3
2014 ²	100.0	2.2	7.1	9.9	24.8	56.0
2015 ²	100.0	2.1	7.8	9.6	24.7	55.9
2016 ²	100.0	1.6	7.2	9.6	24.3	57.3
2016Q2 ²	100.0	1.4	7.3	10.5	24.1	56.6
2017Q1 ²	100.0	2.0	7.9	8.1	24.2	57.9
2017Q2 ²	100.0	1.5	7.3	9.8	22.9	58.6

¹ - Excluding Northern province

² - All the districts are included and the tables consist with reweighted estimates.

**TABLE 4 - HISTORICAL TABLE OF CURRENTLY EMPLOYED PERSONS BY LEVEL OF EDUCATION
(PERCENTAGE) - BOTH SEXES**

Year	Total	Level of education			
		Grade 5 & Below	Grades 6 - 10	GCE (O.L)/ NCGE	GCE (A.L)/ HNCE & above
2009 ¹	100.0	21.1	47.2	15.5	16.2
2010 ¹	100.0	20.2	48.2	15.9	15.8
2011 ²	100.0	18.8	48.1	15.7	17.4
2012 ²	100.0	18.7	47.3	17.5	16.6
2013 ²	100.1	18.2	47.9	15.9	18.1
2014 ²	100.0	16.4	48.9	16.0	18.6
2015 ²	100.0	16.7	47.4	17.3	18.6
2016 ²	100.0	16.2	47.4	16.3	20.1
2016Q2 ²	100.0	15.7	47.2	16.6	20.5
2017Q1 ²	100.0	16.6	46.6	16.7	20.1
2017Q2 ²	100.0	15.6	47.4	16.7	20.3

**TABLE 4A - HISTORICAL TABLE OF CURRENTLY EMPLOYED PERSONS BY LEVEL OF EDUCATION
(PERCENTAGE) - MALE**

Year	Total	Level of education			
		Grade 5 & Below	Grades 6 - 10	GCE (O.L)/ NCGE	GCE (A.L)/ HNCE & above
2009 ¹	100.0	20.3	50.7	15.7	13.3
2010 ¹	100.0	19.1	51.6	16.2	13.1
2011 ²	100.0	18.3	51.0	16.1	14.6
2012 ²	100.0	18.0	51.2	17.7	13.1
2013 ²	100.0	17.8	51.5	16.0	14.6
2014 ²	100.0	16.4	52.6	16.2	14.8
2015 ²	100.0	16.7	51.1	17.7	14.6
2016 ²	100.0	16.1	51.1	16.7	16.1
2016Q2 ²	100.0	14.9	51.5	17.2	16.3
2017Q1 ²	100.0	16.3	50.6	16.7	16.5
2017Q2 ²	100.0	15.4	50.8	17.0	16.8

**TABLE 4B - HISTORICAL TABLE OF CURRENTLY EMPLOYED PERSONS BY LEVEL OF EDUCATION
(PERCENTAGE) - FEMALE**

Year	Total	Level of education			
		Grade 5 & Below	Grades 6 - 10	GCE (O.L)/ NCGE	GCE (A.L)/ HNCE & above
2009 ¹	100.0	22.5	40.6	15.3	21.7
2010 ¹	100.0	22.3	41.3	15.3	21.1
2011 ²	100.0	19.9	42.2	14.9	23.0
2012 ²	100.0	19.9	39.3	17.2	23.7
2013 ²	100.0	18.8	41.0	15.6	24.6
2014 ²	100.0	16.5	41.7	15.8	26.0
2015 ²	100.0	16.6	40.4	16.7	26.3
2016 ²	100.0	16.3	40.6	15.6	27.5
2016Q2 ²	100.0	17.0	39.2	15.3	28.5
2017Q1 ²	100.0	17.1	39.7	16.6	26.6
2017Q2 ²	100.0	16.0	40.9	16.2	27.0

¹ - Excluding Northern province

² - All the districts are included and the Tables consist with reweighted estimates.

**TABLE 5 - HISTORICAL TABLE OF CURRENTLY EMPLOYED PERSONS BY EMPLOYMENT STATUS
(PERCENTAGE) - BOTH SEXES**

YEAR	TOTAL EMPLOYED	EMPLOYEE			EMPLOYER	OWN	UNPAID
		TOTAL	PUBLIC	PRIVATE		ACCOUNT WORKER	FAMILY WORKER
2009 ¹	100.0	57.7	15.5	42.2	2.6	29.2	10.4
2010 ¹	100.0	55.5	14.3	41.3	2.6	31.5	10.3
2011 ²	100.0	55.1	14.6	40.5	2.9	31.5	10.6
2012 ²	100.0	56.5	15.3	41.2	2.8	31.9	8.7
2013 ²	100.0	55.7	15.2	40.5	3.0	32.2	9.1
2014 ²	100.0	56.4	15.5	40.9	2.7	32.0	8.9
2015 ²	100.0	56.1	15.1	41.0	3.1	32.3	8.4
2016 ²	100.0	57.8	14.6	43.3	2.7	31.6	7.8
2016Q2 ²	100.0	57.7	15.1	42.6	2.9	31.6	7.8
2017Q1 ²	100.0	58.2	14.8	43.4	3.1	30.4	8.3
2017Q2 ²	100.0	57.5	14.3	43.2	2.9	32.0	7.7

**TABLE 5A - HISTORICAL TABLE OF CURRENTLY EMPLOYED PERSONS BY EMPLOYMENT STATUS
(PERCENTAGE) - MALE**

YEAR	TOTAL EMPLOYED	EMPLOYEE			EMPLOYER	OWN	UNPAID
		TOTAL	PUBLIC	PRIVATE		ACCOUNT WORKER	FAMILY WORKER
2009 ¹	100.0	59.2	13.7	45.5	3.6	33.0	4.3
2010 ¹	100.0	56.2	12.8	43.4	3.5	36.0	4.3
2011 ²	100.0	56.0	12.8	43.1	3.8	35.9	4.3
2012 ²	100.0	56.7	12.9	43.8	3.8	35.9	3.6
2013 ²	100.0	56.6	12.9	43.8	4.1	36.2	3.0
2014 ²	100.0	57.3	13.1	44.2	3.6	36.2	2.8
2015 ²	100.0	56.7	12.8	43.9	4.2	36.3	2.8
2016 ²	100.0	58.9	12.4	46.4	3.7	34.7	2.7
2016Q2 ²	100.0	58.4	12.5	45.9	4.0	34.7	2.8
2017Q1 ²	100.0	59.4	12.4	46.9	4.0	33.8	2.8
2017Q2 ²	100.0	58.4	12.2	46.3	4.2	34.9	2.4

**TABLE 5B - HISTORICAL TABLE OF CURRENTLY EMPLOYED PERSONS BY EMPLOYMENT STATUS
(PERCENTAGE) - FEMALE**

YEAR	TOTAL EMPLOYED	EMPLOYEE			EMPLOYER	OWN	UNPAID
		TOTAL	PUBLIC	PRIVATE		ACCOUNT WORKER	FAMILY WORKER
2009 ¹	100.0	55.0	19.0	36.0	0.9	22.1	22.0
2010 ¹	100.0	54.3	17.3	37.0	0.8	22.6	22.3
2011 ²	100.0	53.3	18.1	35.2	0.9	22.7	23.1
2012 ²	100.0	56.1	20.2	35.9	0.9	23.7	19.3
2013 ²	100.0	53.9	19.7	34.3	0.9	24.6	20.5
2014 ²	100.0	54.8	20.1	34.7	1.0	23.7	20.5
2015 ²	100.0	55.1	19.3	35.8	1.1	24.9	18.8
2016 ²	100.0	55.9	18.5	37.4	0.9	25.9	17.2
2016Q2 ²	100.0	56.3	19.9	36.4	0.8	25.7	17.1
2017Q1 ²	100.0	56.1	18.8	37.3	1.6	24.6	17.8
2017Q2 ²	100.0	55.6	18.2	37.3	0.5	26.3	17.6

■ These figures are to be treated with caution as the corresponding CV (Coefficient of variation)

¹ - Excluding Northern province

² - All the districts are included and the Tables consist with reweighted estimates.

Table 6 - Currently Employed person by Industry group (Based on ISIC Fourth Revision) - both sexes

Year	Total	Industry Group																
		1	2	3	6	7	8	9	10	11	13	14	15	16	17	19	20	Other
2013	7,681,279	2,321,215	91,045	1,366,162	539,523	1,046,386	467,835	171,236	55,409	137,344	60,917	95,873	570,351	301,768	128,034	121,161	162,013	45,007
2014	7,700,489	2,222,859	74,643	1,389,250	563,532	1,012,447	481,331	181,246	63,038	145,871	47,356	101,247	594,300	313,926	126,950	131,274	195,125	56,094
2015	7,830,976	2,244,547	60,614	1,407,908	549,649	1,059,803	480,338	202,780	52,372	144,507	64,950	120,218	600,249	324,175	137,366	143,768	177,255	60,477
2016	7,947,683	2,153,874	59,907	1,420,628	616,968	1,102,337	516,128	203,083	61,522	159,325	54,703	107,490	609,205	343,837	141,836	137,552	209,101	50,188
2016Q2	7,815,280	1,961,818	58,623	1,449,685	613,058	1,137,606	539,682	185,172	74,032	165,611	52,093	97,125	607,851	324,795	136,272	151,710	207,323	52,825
2017Q1	8,230,207	2,221,761	49,566	1,571,862	684,970	1,082,766	501,556	193,613	69,871	153,957	60,406	126,487	617,182	379,848	145,561	122,189	197,871	50,742
2017Q2	8,138,728	2,114,336	50,160	1,549,489	701,729	1,200,451	514,549	202,897	61,493	146,126	59,549	121,121	578,048	344,861	154,536	124,512	154,145	60,727

Note: These Industry groups are based on ISIC - Rev. 4

1 Agriculture, forestry and fishing (A)

2 Mining & quarrying (B)

3 Manufacturing (C)

6 Construction, Electricity, gas, steam and air conditioning supply, Water supply, sewerage, waste management and remediation activities (D, E,F)

7 Wholesale and retail trade, repair of motor vehicles and motor cycles(G)

8 Transportation and storage (H)

9 Accommodation and food services activities (I)

10 Information and communication (J)

11 Financial and insurance activities (K)

13 Professional, scientific and technical activities (M)

14 Administrative and support service activities (N)

15 Public administration and defence compulsory social security (O)

16 Education (P)

17 Human health and social work activities (Q)

19 Other service activities (S)

20 Activities of households as employers; undifferentiated goods and services - producing activities of households for own use (T)

Other

Other

12 Real estate activities (L)

18 Arts, entertainment and recreation (R)

21 Activities of extra territorial organizations & bodies (U)

Table 6A - Currently Employed person by Industry group (Based on ISIC Fourth Revision) - Male

Year	Total	Industry Group																
		1	2	3	6	7	8	9	10	11	13	14	15	16	17	19	20	Other
2013	5,024,340	1,423,393	80,653	722,816	524,027	744,407	446,960	123,218	42,128	80,102	37,716	70,383	371,194	90,634	49,153	85,164	95,909	36,483
2014	5,075,425	1,375,427	69,796	734,033	540,150	723,692	467,394	124,655	47,897	82,803	31,456	81,190	384,657	96,971	55,148	102,024	115,389	42,743
2015	5,097,797	1,360,831	57,116	741,643	527,419	756,298	465,920	140,042	41,206	79,485	42,853	91,639	395,291	92,824	45,976	105,307	107,469	46,478
2016	5,149,948	1,302,613	56,762	739,372	590,459	770,376	495,894	129,928	45,525	90,506	33,125	83,937	394,974	105,604	53,843	99,146	119,873	38,011
2016Q2	5,100,734	1,208,473	55,040	768,626	587,955	786,785	514,224	123,298	55,703	99,568	33,020	76,099	381,100	99,201	50,816	111,426	106,105	43,295
2017Q1	5,235,046	1,311,760	45,821	795,706	651,658	766,708	483,010	125,261	47,423	101,328	45,585	99,039	382,710	112,944	46,326	77,349	108,086	34,333
2017Q2	5,315,916	1,302,571	47,382	807,729	673,213	836,507	496,175	136,759	43,825	87,464	37,811	94,922	377,467	98,738	52,260	89,650	82,557	50,885

Table 6B - Currently Employed person by Industry group (Based on ISIC Fourth Revision) - Female

Year	Total	Industry Group																
		1	2	3	6	7	8	9	10	11	13	14	15	16	17	19	20	Other
2013	2,656,938	897,822	10,392	643,346	15,495	301,979	20,875	48,018	13,281	57,242	23,201	25,490	199,157	211,134	78,881	35,997	66,104	8,524
2014	2,625,065	847,432	4,847	655,218	23,382	288,755	13,937	56,591	15,141	63,069	15,900	20,057	209,643	216,955	71,802	29,250	79,735	13,351
2015	2,733,179	883,716	3,498	666,265	22,230	303,507	14,418	62,738	11,165	65,023	22,097	28,579	204,958	231,350	91,389	38,461	69,786	13,999
2016	2,797,735	851,261	3,145	681,256	26,509	331,961	20,234	73,154	15,997	68,819	21,578	23,553	214,231	238,233	87,993	38,405	89,228	12,178
2016Q2	2,714,545	753,344	3,582	681,059	25,103	350,821	25,458	61,874	18,329	66,043	19,073	21,026	226,751	225,594	85,456	40,284	101,218	9,530
2017Q1	2,995,161	910,001	3,745	776,156	33,312	316,058	18,546	68,352	22,448	52,629	14,820	27,447	234,472	266,904	99,236	44,840	89,785	16,409
2017Q2	2,822,812	811,765	2,778	741,759	28,516	363,944	18,374	66,138	17,669	58,662	21,738	26,199	200,582	246,123	102,276	34,862	71,588	9,842

Note: These Industry groups are based on ISIC - Rev. 4

☐ These figures are to be treated with caution as the corresponding CV (Coefficient of variation)

1 Agriculture, forestry and fishing (A)

2 Mining & quarrying (B)

3 Manufacturing (C)

6 Construction, Electricity, gas, steam and air conditioning supply, Water supply, sewerage, waste management and remediation activities (D, E,F)

7 Wholesale and retail trade, repair of motor vehicles and motor cycles(G)

8 Transportation and storage (H)

9 Accommodation and food services activities (I)

10 Information and communication (J)

11 Financial and insurance activities (K)

13 Professional, scientific and technical activities (M)

14 Administrative and support service activities (N)

15 Public administration and defence compulsory social security (O)

16 Education (P)

17 Human health and social work activities (Q)

19 Other service activities (S)

20 Activities of households as employers; undifferentiated goods and services - producing activities of households for own use (T)

Other

Other

12 Real estate activities (L)

18 Arts, entertainment and recreation (R)

21 Activities of extra territorial organizations & bodies (U)

Table 6C: Historical table of currently employed population by major industry group - Both sexes

Major Industry Group	Year						
	2013	2014	2015	2016	2016Q2	2017Q1	2017Q2
Total	7,681,279	7,700,490	7,830,976	7,947,683	7,815,280	8,230,207	8,138,728
Agriculture	2,321,215	2,222,859	2,244,547	2,153,874	1,961,818	2,221,761	2,114,336
Industry	1,996,730	2,027,426	2,018,171	2,097,503	2,121,365	2,306,398	2,301,377
Services	3,363,334	3,450,205	3,568,258	3,696,306	3,732,097	3,702,049	3,723,015

Table 6D: Historical table of currently employed population by major industry group (percentage) - Both sexes

Major Industry Group	Year						
	2013	2014	2015	2016	2016Q2	2017Q1	2017Q2
Total	100.0	100.0	100.0	100.0	100.0	100.0	100.0
Agriculture	30.2	28.9	28.7	27.1	25.1	27.0	26.0
Industry	26.0	26.3	25.8	26.4	27.1	28.0	28.3
Services	43.8	44.8	45.6	46.5	47.8	45.0	45.7

Note: These Industry groups are based on ISIC - Rev. 4

Agriculture

1. Agriculture Forestry and Fishery (A)

Industries

1. Mining & Quarrying (B)
2. Manufacturing (C)
3. Construction, Electricity, gas, steam and air conditioning supply, Water supply, sewerage, waste management and remediation activities (D, E,F)

Services

1. Wholesale and retail trade, repair of motor vehicles and motor cycles(G)
2. Transportation and storage (H)
3. Accommodation and food services activities (I)
4. Information and communication (J)
5. Financial and insurance activities (K)
6. Professional, scientific and technical activities (M)
7. Administrative and support service activities (N)
8. Public administration and defence compulsory social security (O)
9. Education (P)
10. Human health and social work activities (Q)
11. Other service activities (S)
12. Activities of households as employers; undifferentiated goods and services - producing activities of households for own use (T)
13. Real estate activities (L) Arts, entertainment and recreation (R) Activities of extra territorial organizations & bodies (U)

Table 7 - Currently Employed person by Occupation group (Based on ISCO 08) - Both sexes

Year	Total	Occupation group									
		1	2	3	4	5	6	7	8	9	10
2013	7,681,279	365,049	483,587	447,965	281,095	847,409	1,490,219	1,302,496	640,410	1,773,456	49,593
2014	7,700,489	353,465	491,521	450,247	327,479	902,710	1,562,251	1,312,975	635,899	1,633,672	30,270
2015	7,830,976	480,097	511,230	470,645	311,455	852,722	1,457,350	1,266,101	673,380	1,766,704	41,292
2016	7,947,683	480,492	519,032	484,965	320,791	891,034	1,435,354	1,274,167	702,675	1,795,378	43,795
2016Q2	7,815,280	512,787	503,624	495,571	304,297	923,804	1,313,501	1,277,211	719,792	1,716,425	48,267
2017Q1	8,230,207	505,890	515,526	533,477	345,101	845,433	1,402,215	1,411,424	701,082	1,928,091	41,970
2017Q2	8,138,728	554,698	540,184	541,264	333,196	874,948	1,415,556	1,355,565	716,279	1,776,857	30,181
1	Managers, Senior Officials and Legislators				6	Skilled Agricultura, Forestry and Fishery workers					
2	Professionals				7	Craft and Related Trades workers					
3	Technicians and Associate Professionals				8	Plant and Machine operators and Assemblers					
4	Clerks and Clerical support workers				9	Elementary occupations					
5	Services and Sales workers				10	Armed Forces Occupations & unidentified occupations					

Table 7A - Currently Employed person by Occupation group (Based on ISCO 08) - Male

Year	Total	Occupation group									
		1	2	3	4	5	6	7	8	9	10
2013	5,024,340	258,974	184,962	288,509	138,934	587,580	980,699	884,473	556,576	1,099,578	44,055
2014	5,075,424	265,819	175,533	301,206	157,091	630,281	1,017,807	881,891	559,814	1,056,416	29,566
2015	5,097,798	355,643	174,644	318,745	150,246	585,455	965,084	833,470	577,038	1,101,377	36,096
2016	5,149,948	344,185	188,059	310,846	155,926	606,054	930,845	830,428	607,801	1,139,332	36,473
2016Q2	5,100,734	375,495	183,060	320,564	138,971	625,456	851,809	841,186	619,600	1,104,419	40,175
2017Q1	5,235,046	381,904	172,715	344,104	166,115	560,748	892,552	895,405	588,812	1,193,399	39,294
2017Q2	5,315,916	398,246	218,342	337,867	155,321	586,482	924,958	908,007	626,665	1,132,803	27,226

Table 7B - Currently Employed person by Occupation group (Based on ISCO 08) - Female

Year	Total	Occupation group									
		1	2	3	4	5	6	7	8	9	10
2013	2,656,937	106,075	298,625	159,456	142,161	259,829	509,519	418,023	83,834	673,878	5,537
2014	2,625,065	87,646	315,988	149,041	170,388	272,429	544,444	431,084	76,085	577,256	704
2015	2,733,178	124,454	336,586	151,900	161,209	267,267	492,267	432,631	96,342	665,326	5,196
2016	2,797,735	136,307	330,973	174,120	164,865	284,980	504,509	443,739	94,874	656,046	7,322
2016Q2	2,714,545	137,292	320,564	175,008	165,326	298,348	461,692	436,025	100,192	612,006	8,092
2017Q1	2,995,161	123,986	342,811	189,373	178,986	284,685	509,663	516,019	112,270	734,692	2,676
2017Q2	2,822,812	156,452	321,842	203,398	177,875	288,466	490,598	447,558	89,614	644,054	2,955

These figures are to be treated with caution as the corresponding CV (Coefficient of variation) values are high.

- | | | | |
|---|--|----|---|
| 1 | Managers, Senior Officials and Legislators | 6 | Skilled Agricultura, Forestry and Fishery workers |
| 2 | Professionals | 7 | Craft and Related Trades workers |
| 3 | Technicians and Associate Professionals | 8 | Plant and Machine operators and Assemblers |
| 4 | Clerks and Clerical support workers | 9 | Elementary occupations |
| 5 | Services and Sales workers | 10 | Armed Forces Occupations & unidentified occupations |

TABLE 8 - CURRENTLY EMPLOYED PERSONS BY HOURS PER WEEK ACTUALLY WORKED AT THE MAIN JOB AND MAJOR INDUSTRIAL GROUP (PERCENTAGE) - BOTH SEXES

MAJOR INDUSTRIAL GROUP	TOTAL	0 *	1 - 9	10 - 19	20 - 29	30 - 39	40 - 49	50 & OVER
Total	100.0	6.6	1.5	5.3	8.0	13.9	34.6	30.0
1	100.0	9.7	2.5	8.9	14.2	18.8	31.1	14.8
2	100.0	14.4	2.4	5.9	2.2	6.5	40.0	28.6
3	100.0	5.9	1.7	6.6	8.1	13.2	34.5	30.1
6	100.0	6.2	1.4	6.1	7.6	10.8	38.6	29.2
7	100.0	3.4	0.4	2.8	5.3	9.7	28.5	49.9
8	100.0	5.6	0.8	1.3	3.9	9.1	33.2	46.2
9	100.0	4.7	2.1	2.6	5.1	6.1	25.2	54.1
10	100.0	4.5	1.9	1.7	1.9	9.1	53.6	27.2
11	100.0	1.5	0.8	0.7	2.7	4.9	55.7	33.7
13	100.0	4.5	1.8	1.8	6.2	10.6	53.8	21.3
14	100.0	2.5	..	2.2	1.8	6.9	45.1	41.5
15	100.0	3.6	0.8	0.7	2.0	6.2	57.1	29.5
16	100.0	16.1	2.5	4.0	10.8	43.1	20.0	3.5
17	100.0	3.9	..	0.6	2.6	7.9	36.7	48.2
19	100.0	4.1	2.6	8.5	5.5	15.1	32.2	32.0
20	100.0	6.0	2.1	7.5	5.7	10.3	36.2	32.1
Other	100.0	1.6	1.9	4.8	1.6	23.2	32.6	34.2

* Has a job but not at work during the reference week

.. Net reported

■ These figures are to be treated with caution as the corresponding CV (Coefficient of variation) values are high.

Industry group

- 1 Agriculture, forestry and fishing (A)
- 2 Mining & quarrying (B)
- 3 Manufacturing (C)
- 6 Construction, Electricity, gas, steam and air conditioning supply, Water supply, sewerage, waste management and remediation activities (D, E,F)
- 7 Wholesale and retail trade, repair of motor vehicles and motor cycles(G)
- 8 Transportation and storage (H)
- 9 Accommodation and food services activities (I)
- 10 Information and communication (J)
- 11 Financial and insurance activities (K)
- 13 Professional, scientific and technical activities (M)
- 14 Administrative and support service activities (N)
- 15 Public administration and defence compulsory social security (O)
- 16 Education (P)
- 17 Human health and social work activities (Q)
- 19 Other service activities (S)
- 20 Activities of households as employers; undifferentiated goods and services - producing activities of households for own use (T)
- Other
 - Other
 - 12 Real estate activities (L)
 - 18 Arts, entertainment and recreation (R)
 - 21 Activities of extra territorial organizations & bodies (U)

**TABLE 9 - HISTORICAL TABLE OF CURRENTLY UNEMPLOYED PERSONS BY AGE GROUPS
(PERCENTAGE) - BOTH SEXES**

YEAR	TOTAL	AGE GROUPS				
		15 - 19 YRS	20 - 24 YRS	25 - 29 YRS	30 - 39 YRS	40 + YRS
2009 ¹	100.0	14.5	37.5	21.3	15.1	11.6
2010 ¹	100.0	14.8	38.7	21.2	14.7	10.6
2011 ²	100.0	12.7	42.2	20.7	15.9	8.5
2012 ²	100.0	14.1	40.5	18.8	15.8	10.8
2013 ²	100.0	13.7	41.0	18.1	15.1	12.1
2014 ²	100.0	14.2	39.8	19.3	15.4	11.3
2015 ²	100.0	14.5	37.4	20.5	15.8	11.8
2016 ²	100.0	16.1	39.7	21.1	13.2	9.8
2016Q2 ²	100.0	14.9	42.3	18.2	13.4	11.2
2017Q1 ²	100.0	14.9	36.6	18.3	16.5	13.7
2017Q2 ²	100.0	14.3	35.8	25.4	13.0	11.4

**TABLE 9A - HISTORICAL TABLE OF CURRENTLY UNEMPLOYED PERSONS BY AGE GROUPS
(PERCENTAGE) - MALE**

YEAR	TOTAL	AGE GROUPS				
		15 - 19 YRS	20 - 24 YRS	25 - 29 YRS	30 - 39 YRS	40+ YRS
2009 ¹	100.0	17.9	36.4	18.9	12.4	14.4
2010 ¹	100.0	19.6	41.2	15.5	11.7	12.0
2011 ²	100.0	17.6	44.7	17.1	13.1	7.6
2012 ²	100.0	19.6	41.6	17.0	12.3	9.4
2013 ²	100.0	16.9	44.0	15.5	11.5	12.1
2014 ²	100.0	20.1	37.6	18.3	11.7	12.3
2015 ²	100.0	21.7	39.9	14.6	12.6	11.2
2016 ²	100.0	23.0	42.8	16.9	7.7	9.6
2016Q2 ²	100.0	23.8	44.4	11.9	7.1	12.8
2017Q1 ²	100.0	19.6	44.1	13.8	7.5	15.0
2017Q2 ²	100.0	18.5	35.4	24.2	12.7	9.1

**TABLE 9B - HISTORICAL TABLE OF CURRENTLY UNEMPLOYED PERSONS BY AGE GROUPS
(PERCENTAGE) - FEMALE**

YEAR	TOTAL	AGE GROUPS				
		15 - 19 YRS	20 - 24 YRS	25 - 29 YRS	30 - 39 YRS	40+ YRS
2009 ¹	100.0	11.5	38.5	23.5	17.5	9.0
2010 ¹	100.0	10.7	36.5	26.1	17.4	9.3
2011 ²	100.0	9.1	40.4	23.4	17.9	9.2
2012 ²	100.0	9.2	39.6	20.4	18.9	12.0
2013 ²	100.0	11.0	38.4	20.3	18.2	12.1
2014 ²	100.0	8.9	41.7	20.2	18.7	10.4
2015 ²	100.0	9.4	35.6	24.6	18.1	12.2
2016 ²	100.0	11.1	37.5	24.2	17.2	10.0
2016Q2 ²	100.0	8.0	40.8	23.1	18.2	10.0
2017Q1 ²	100.0	11.5	31.2	21.6	22.9	12.8
2017Q2 ²	100.0	10.9	36.2	26.4	13.3	13.2

These figures are to be treated with caution as the corresponding CV (Coefficient of variation)

¹ - Excluding Northern province

² - All the districts are included and the Tables consist with reweighted estimates.

TABLE 10 - HISTORICAL TABLE OF CURRENTLY UNEMPLOYED PERSONS BY LEVEL OF EDUCATION (PERCENTAGE) - BOTH SEXES

YEAR	TOTAL	LEVEL OF EDUCATION			
		GRADE 5 & BELOW	GRADES 6 - 10	GCE(O/L) NCGE	GCE(A/L) HNCE & ABOVE
2009 ¹	100.0	4.3	39.9	23.1	32.7
2010 ¹	100.0	2.7	34.9	22.7	39.7
2011 ²	100.0	2.9	38.1	19.8	39.2
2012 ²	100.0	2.6	37.4	27.2	32.9
2013 ²	100.0	3.9	36.5	22.1	37.5
2014 ²	100.0	3.1	37.7	22.4	36.8
2015 ²	100.0	2.5	34.4	24.4	38.7
2016 ²	100.0	2.7	35.4	22.1	39.8
2016Q2 ²	100.0	2.5	35.2	22.5	39.8
2017Q1 ²	100.0	4.5	32.1	23.5	39.9
2017Q2 ²	100.0	1.4	36.7	22.9	39.0

TABLE 10A - HISTORICAL TABLE OF CURRENTLY UNEMPLOYED PERSONS BY LEVEL OF EDUCATION (PERCENTAGE) - MALE

YEAR	TOTAL	LEVEL OF EDUCATION			
		GRADE 5 & BELOW	GRADES 6 - 10	GCE(O/L) NCGE	GCE(A/L) HNCE & ABOVE
2009 ¹	100.0	4.4	48.0	25.3	22.3
2010 ¹	100.0	3.4	40.4	25.4	30.9
2011 ²	100.0	2.0	47.8	20.3	29.9
2012 ²	100.0	2.0	46.7	29.6	21.7
2013 ²	100.0	4.7	43.7	24.3	27.4
2014 ²	100.0	3.1	48.1	22.7	26.0
2015 ²	100.0	1.7	44.1	30.9	23.4
2016 ²	100.0	1.5	48.2	23.9	26.4
2016Q2 ²	100.0	0.9	53.0	21.9	24.1
2017Q1 ²	100.0	1.3	39.1	29.2	30.4
2017Q2 ²	100.0	1.2	42.9	27.7	28.1

TABLE 10B - HISTORICAL TABLE OF CURRENTLY UNEMPLOYED PERSONS BY LEVEL OF EDUCATION (PERCENTAGE) - FEMALE

YEAR	TOTAL	LEVEL OF EDUCATION			
		GRADE 5 & BELOW	GRADES 6 - 10	GCE(O/L) NCGE	GCE(A/L) HNCE & ABOVE
2009 ¹	100.0	4.3	32.5	21.1	42.1
2010 ¹	100.0	2.1	30.1	20.5	47.3
2011 ²	100.0	3.5	30.9	19.4	46.1
2012 ²	100.0	3.0	29.0	25.0	43.0
2013 ²	100.0	3.2	30.2	20.3	46.2
2014 ²	100.0	3.1	28.5	22.1	46.4
2015 ²	100.0	3.0	27.7	19.9	49.4
2016 ²	100.0	3.6	26.0	20.8	49.6
2016Q2 ²	100.0	3.8	21.5	23.0	51.8
2017Q1 ²	100.0	6.7	27.1	19.5	46.7
2017Q2 ²	100.0	1.5	31.8	19.2	47.5

These figures are to be treated with caution as the corresponding CV (Coefficient of variation) values are high.

¹ - Excluding Northern province

² - All the districts are included and the Tables consist with reweighted estimates.

TABLE 11 - CURRENTLY UNEMPLOYED PERSONS BY SEX AND DURATION OF UNEMPLOYMENT

(2017 2nd Quarter)

Sex	Total	Duration		
		Less than 6 months	6 to less than 12 months	12+ months
Both sexes	380,594	153,206	89,303	138,084
%	100.0	40.3	23.5	36.3
Male	166,290	83,937	42,129	40,223
%	100.0	50.5	25.3	24.2
Female	214,304	69,269	47,174	97,861
%	100.0	32.3	22.0	45.7

STANDARD ERROR AND COEFFICIENT OF VARIATION OF SELECTED VARIABLES

	Estimated Value	Standard Error	Coefficient of Variation (%)	Estimated Value (Ratio)	Standard Error	Coefficient of Variation (%)
General labour force characteristics						
Population (15 years & over)	15,813,790	124,333	0.8			
Employed Population	8,138,728	88,761	1.1			
Unemployed Population	380,594	24,201	6.4			
Employment Rate				95.5	0.27	0.29
Unemployment Rate				4.5	0.27	6.15
Labour Force	8,519,322	92,362	1.1			
Not in Labour Force	7,294,468	95,120	1.3			
Employed persons by major industry Groups						
1	2,114,336	79,068	3.7			
2	50,160	9,190	18.3			
3	1,549,489	52,461	3.4			
6	701,729	31,015	4.4			
7	1,200,451	45,238	3.8			
8	514,549	26,241	5.1			
9	202,897	18,911	9.3			
10	61,493	8,653	14.1			
11	146,126	13,330	9.1			
13	59,549	8,182	13.7			
14	121,121	13,240	10.9			
15	578,048	28,616	5.0			
16	344,861	23,416	6.8			
17	154,536	15,972	10.3			
19	124,512	12,624	10.1			
20	154,145	15,552	10.1			
Other	60,727	7,721	12.7			
Unemployed persons by level of education						
Below grade 6	5,379	2,225	41.4			
Grade 6 - 10	139,545	13,086	9.4			
G.C.E.(O/L)/N.C.G.E.	87,161	9,232	10.6			
G.C.E.(A/L)/H.N.C.E. & above	148,509	10,641	7.2			
Industry group						
1 Agriculture, forestry and fishing (A)						
2 Mining & quarrying (B)						
3 Manufacturing (C)						
6 Construction, Electricity, gas, steam and air conditioning supply, Water supply, sewerage, waste management and remediation activities (D, E,F)						
7 Wholesale and retail trade, repair of motor vehicles and motor cycles(G)						
8 Transportation and storage (H)						
9 Accommodation and food services activities (I)						
10 Information and communication (J)						
11 Financial and insurance activities (K)						
13 Professional, scientific and technical activities (M)						
14 Administrative and support service activities (N)						
15 Public administration and defence compulsory social security (O)						
16 Education (P)						
17 Human health and social work activities (Q)						
19 Other service activities (S)						
20 Activities of households as employers; undifferentiated goods and services - producing activities of households for own use (T)						
Other						
Other						
Real estate activities (L)						
Arts, entertainment and recreation (R)						
Activities of extra territorial organizations & bodies (U)						

Special Statistical Appendix

EXPLANATORY NOTES

Coverage

Sri Lanka Labour Force Survey was designed to measure the levels and trends of employment, unemployment and labour force in Sri Lanka. This survey is being conducted quarterly, since the first quarter of 1990.

This quarterly survey of households is conducted through a scientifically selected sample designed to represent the civilian non-institutional population. Respondents are interviewed to obtain information about the employment status etc. of each member of the household 15 years of age and older.

The field work of the survey is done during the third week of each month, Monday through Sunday. This is known as the "survey week". The inquiry relates to activity or status are referred in the preceding week of the survey week; referred to as the "reference week".

The concepts and definitions underlying labour force data are as follows.

Concepts & Definitions

1. **Labour force:** The labour force is composed of the economically active population 15 years of age and over.
2. **The Economically Active Population:** is defined as those persons who are/were employed or unemployed during the reference period of the survey.
3. **Employed:** Persons, who during the reference period, worked as paid employees, employers, own account workers (self employed), or unpaid family workers are said to be employed. This includes persons with a job but not at work during the reference period.
4. **Unemployed:** Persons who are seeking and available for work, but had no employment during the reference period.
5. **Currently Economically Active:** A person who was employed or unemployed during the current reference period is considered to be currently economically active.
6. **Not in the Labour Force (not economically active):** Persons who were neither working nor available/looking for work are classified as "not in the labour force". Persons are not in the labour force for such reasons as: full time care of the household, full – time students, retired or old age, infirmed or disabled, or are not interested in working for one reason or another. Current and Usual definitions apply.
7. **Criteria for classification of underemployment:** In order to classify an employed persons as visibly underemployed,

(i) If the person has worked less than the normal duration in his/her main activity

In Sri Lanka scenario, 35 hours per week is taken as the cut-off point applicable to all workers, except government teachers. As in practice, though teachers do have a normal duration of work which is below the general cut-off point, they should be on a full time schedule according to the nature of their job. Further, those who do have a secondary job or those who are employers, were considered as having worked the normal duration in their respective activity.

Therefore, if the person has worked less than the normal duration in his/her activity (as described above), then the person is further questioned to ascertain whether he/She is prepared and available for further work if provided. Such persons are considered underemployed in their respective employment.

(ii) If the person has worked more than the normal duration in his/her activity

If the person has worked even more than 35 hours as usually, but he has worked less than 35 hours actually in the reference period, only due to the off season or bad weather, such persons were also further questioned to check their underemployment situation, considering them as a special category.

8. Informal Sector Employment

In order to classify a person to be employed in informal sector employment, following information were used.

- (i) Registration of the organization
- (ii) Accounts keeping practices of the organization
- (iii) Total number of regular employees of the organization.

Reliability of the estimates

Statistics based on the quarterly labour force data are subject to both sampling and non - sampling errors. When a sample rather than the entire population is surveyed, there is a chance that the sample estimates may differ from the "true" population values they represent.

The exact differences or sampling error, varies depending on the particular sample selected, and this variability is measured by the standard error of the estimate. There is about a 95 percent chance, or level of confidence, that an estimate based on a sample will differ by no more than 1.96 standard errors from the " true" population value, because of sampling error. Analyses relating to the Labour Force Survey are generally conducted at the 95 percent level of confidence.

For example, the confidence interval for the quarterly unemployment rate is calculated as follows

When the estimated unemployment rate is 4.5 and standard error of unemployment rate is 0.275 then 95% confidence interval

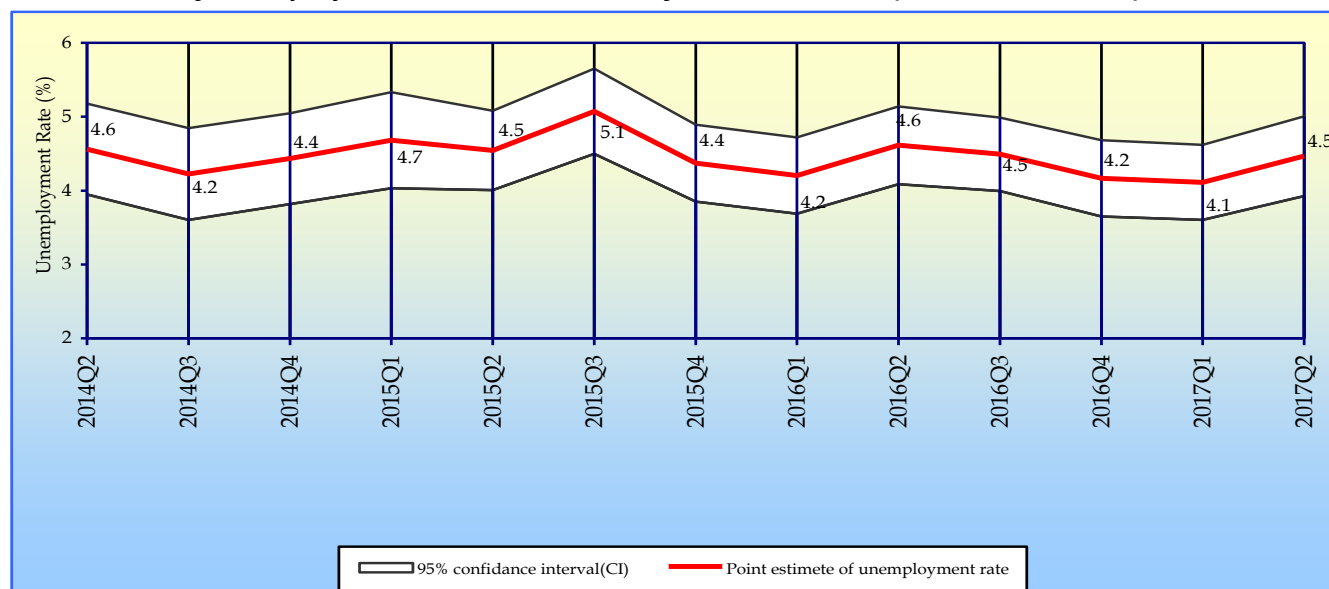
Estimated value (of the unemployment rate) \pm (standard error) * (1.96)

4.5 \pm (0.275) * (1.96)
 (4.5 \pm 0.539)

This means, the 95 percent confidence interval on the quarterly unemployment rate could range from (5.6 to 7.2). This implies that there is about 95 percent chance that the "true" unemployment rate lies within this interval. This range includes all the values range from 5.6 to 7.2. When the comparison of this estimate is done between two quarters, if any of the value within the 95 percent confidence interval of one quarter overlaps with the confidence interval of the other , it means that the estimates of this two quarters are not significantly different.

Therefore, in each quarterly labour force report, a separate table is given including approximate standard errors for some selected variables, so that users could understand this statistical scenario clearly.

Distribution of unemployment rates and 95% confidence intervals (2014Q2 - 2017Q2)



Note:

As seen in figure 2, it is very important to note that, there were no statistically significant differences between the unemployment rates reported in different time periods of 2013/2016, when sampling error was considered.

Change in survey schedule

Current survey concepts and methods are very similar to those introduced at the beginning of the survey in 1990. However, some changes have been made over the years to improve the accuracy and usefulness of the data. In January 2006, some improvements were made to the labour force survey schedule in order to fulfill the requirements of data users and also to provide additional information for planning purposes. The revision was made focusing on literacy, household economic activities, and informal sector employment and under employment etc.

From January , 2013 onwards, the lower bound of working age populations is considered as age 15, hence age 15 and over population is considered as working age population. The survey schedule is updated to obtain more precise information on following age, informal employment, informal sector, secondary occupation, wages & income , unemployment & trainings.

New Industry & Occupation classifications

From January 2013 onward the survey uses new industry & occupation classifications, such as

SLIC Rev 4:- Sri Lanka Standard Industry Classification based on International Standard Industry classification - Rev.4 (ISIC Rev 4)

SLSCO 08:- Sri Lanka Standard Classification of Occupation-2008 based on International Standard Classification of Occupation-2008 (ISCO 2008)

Note :

It is important to note that, all the data published here are the estimates based on a sample survey and these are subject to sampling errors. These sampling errors can be statistically evaluated from the survey results. Therefore, sampling error is normally measured in terms of the standard error of the particular variable. Standard error could be used to calculate the confidence limits with a prescribed accuracy where the true value of the estimates lies.

Further reliability of the estimates can be expressed in terms of Coefficient of Variation (CV). The CV is a relative measure of the sampling error and is calculated as sampling error divided by the expected value of the given characteristic.

In view of this, following table is given to show the estimates for some selected variables, it's standard error, CV and 95% Confidence interval.

It is also important to note that all the estimates we publish in this report are subject to sampling error and one should be cautious in the interpretation of results, especially with respect to the trends over time.

Estimate of Confidence Intervals for some selected characteristics

Year	Labour Force					Employed				
	No.	Standard error	C.V (%)	95% C.I.		No.	Standard error	C.V (%)	95% C.I.	
				Lower	Upper				Lower	Upper
2009 ¹	8,051,089	107,213	1.33	7,840,876	8,261,302	7,579,835	102,161	1.35	7,379,527	7,780,143
2010 ¹	8,096,477	110,375	1.36	7,880,065	8,312,889	7,696,142	105,457	1.37	7,489,372	7,902,913
2011 ²	7,926,445	72,730	0.92	7,783,791	8,069,099	7,591,591	69,573	0.92	7,455,129	7,728,053
2012 ²	7,798,407	66,291	0.85	7,668,392	7,928,422	7,488,704	63,894	0.85	7,363,389	7,614,018
2013 ²	8,033,804	55,985	0.70	7,924,021	8,143,587	7,681,279	54,298	0.71	7,574,802	7,787,755
2014 ²	8,048,884	60,868	0.76	7,929,525	8,168,243	7,700,489	58,417	0.76	7,585,937	7,815,042
2015 ²	8,214,473	52,021	0.63	8,112,463	8,316,483	7,830,976	50,426	0.64	7,732,093	7,929,860
2016 ²	8,310,682	66,023	0.79	8,181,215	8,440,148	7,947,683	64,616	0.81	7,820,977	8,074,389
2016Q2 ²	8,193,266	118,321	1.44	7,960,876	8,425,657	7,815,280	115,422	1.48	7,588,583	8,041,976
2017Q1 ²	8,583,082	96,084	1.12	8,394,371	8,771,793	8,230,207	93,303	1.13	8,046,958	8,413,456
2017Q2 ²	8,519,322	92,362	1.08	8,337,922	8,700,722	8,138,728	88,761	1.09	7,964,400	8,313,057

Year	Unemployed					Unemployment Rate				
	No.	Standard error	C.V (%)	95% C.I.		Rate	Standard error	C.V (%)	95% C.I.	
				Lower	Upper				Lower	Upper
2009 ¹	471,254	15,683	3.33	440,503	502,004	5.9	0.2	3.07	5.5	6.2
2010 ¹	400,335	14,742	3.68	371,430	429,240	4.9	0.2	3.39	4.6	5.3
2011 ²	334,854	15,691	4.69	304,078	365,631	4.2	0.2	4.49	3.9	4.6
2012 ²	309,703	13,287	4.29	283,643	335,763	4.0	0.2	4.14	3.6	4.3
2013 ²	352,526	12,030	3.41	328,935	376,116	4.4	0.1	3.31	4.1	4.7
2014 ²	348,395	12,697	3.64	323,497	373,293	4.3	0.2	3.50	4.0	4.6
2015 ²	383,496	12,283	3.20	359,410	407,583	4.7	0.1	3.11	4.4	5.0
2016 ²	362,999	11,186	3.08	341,064	384,933	4.4	0.1	3.02	4.1	4.6
2016Q2 ²	377,987	22,492	5.95	333,811	422,163	4.6	0.3	5.80	4.1	5.1
2017Q1 ²	352,875	22,757	6.45	308,179	397,570	4.1	0.3	6.28	3.6	4.6
2017Q2 ²	380,594	24,201	6.36	333,062	428,125	4.5	0.3	6.15	3.9	5.0

¹ - Excluding Northern provinces² - All the districts are included and the Tables consist with reweighted estimates

ALTERNATIVE ESTIMATES

Alternative Estimates of Employment, Unemployment and Labour Force Characteristics

Official employment, unemployment and labour force characteristics are estimated at the Sri Lanka Labour Force Survey, based on the internationally comparable concepts and definitions recommended by the ILO. However the validity of the concepts and definitions used at the survey is questioned very often in some forums, for the appropriateness of these concepts and definitions in the Sri Lankan context.

The concepts and definitions, which were found to be controversial, are as below.

- (1) **Number of Hours of Work** : A person who work **at least one hour** during the reference week, is considered **employed**, under these definitions.
- (2) **Working Age Population** : All persons of **age 10 years and over** are considered to be in the working age, before 2013. However, this was changed as **age 15 and over** from 2013 onward.
- (3) **Employment Status** : All,
 - a) Paid employees, (those who work for wages/salaries).
 - b) Employers (who have at least one paid employee under them).
 - c) Own account workers (who carry out the economic activity without having anypaid employees).
 - d) Contributing family workers (who make their contribution to the economic activities carried out bytheir own household, without wages/salaries).

The validity of the above concepts and definitions is raised due to the following reasons.

- (1) **Number of Hours of Work** : Some pointed out that one hour per week is too low, to consider a person to be employed.
- (2) **Working Age Population** : Some pointed out those persons in the age group 10-14 yrs. are too young to be considered in the working age. (From 2013 onward the working age population is considered as age 15 and over).
- (3) **Employment Status** : Some pointed out that 'contributing family workers' may work in the family enterprise without payment because they have no other work, and so it is not appropriate to consider them as employed.

An attempt has been made to produce '**Alternative estimates of Employment, Unemployment and Labour Force Characteristics,**' by revising the original concepts and definitions so that the above issues are addressed as explained below.

The revisions made are,

- (1) **Number of Hours of Work** : Persons who work **20 hours or more per week only** are considered to be employed.
- (2) **Contributing Family Worker** : Contributing family workers are **not** considered as employed. They are considered as **economically inactive** (not in the labour force) so only, **a) paid employees b) employers and c) own account workers are considered to be employed.**

Following tables are based on the above alternative concepts and definitions.

Alternative Estimates of Employment, Unemployment and Labour Force Characteristics

TABLE 1 - LABOUR FORCE STATUS OF HOUSEHOLD POPULATION 15 YEARS & OVER (ALTERNATIVE ESTIMATES)

YEAR	HOUSEHOLD POPULATION (15 YEARS & OVER)	TOTAL LABOUR FORCE	LABOUR FORCE PARTICI: RATE(%)	LABOUR FORCE				NOT IN LABOUR FORCE NUMBER
				EMPLOYED		UNEMPLOYED		
				NUMBER	RATE (% TO TOTAL LABOUR FORCE)	NUMBER	RATE (% TO TOTAL LABOUR FORCE)	
2009 ¹	14,876,264	6,836,598	46.0	6,365,344	93.1	471,254	6.9	8,039,665
2010 ¹	15,166,285	6,892,444	45.4	6,492,109	94.2	400,335	5.8	8,273,841
2011 ²	14,975,989	6,687,771	44.7	6,352,916	95.0	334,854	5.0	8,288,219
2012 ²	14,857,578	6,846,805	46.1	6,537,101	95.5	309,703	4.5	8,010,773
2013 ²	14,958,239	6,966,035	46.6	6,600,172	94.7	365,863	5.3	8,007,536
2014 ²	15,134,484	7,017,985	46.4	6,669,590	95.0	348,395	5.0	8,116,499
2015 ²	15,281,945	7,156,393	46.8	6,772,896	94.6	383,496	5.4	8,125,553
2016 ²	15,448,679	7,325,972	47.4	6,962,973	95.0	362,999	5.0	8,122,707
2016Q2 ²	15,352,834	7,203,447	46.9	6,825,460	94.8	377,987	5.2	8,149,387
2017Q1 ²	15,684,110	7,472,857	47.6	7,119,982	95.3	352,875	4.7	8,211,254
2017Q2 ²	15,813,790	7,442,591	47.1	7,061,997	94.9	380,594	5.1	8,371,199

TABLE 2 - HISTORICAL TABLE OF NUMBER AND RATE OF UNEMPLOYMENT BY AGE (ALTERNATIVE ESTIMATES)

YEAR	AGE GROUP											
	TOTAL		15 - 19		20 - 24		25 - 29		30 - 39		40 & ABOVE	
	NO.	RATE	NO.	RATE	NO.	RATE	NO.	RATE	NO.	RATE	NO.	RATE
2009 ¹	471,254	6.9	68,447	27.3	176,801	24.9	100,508	11.9	70,988	4.2	54,511	1.6
2010 ¹	400,335	5.8	59,339	26.5	154,788	22.5	84,777	10.5	59,041	3.6	42,390	1.2
2011 ²	334,854	5.0	42,636	20.9	141,252	20.6	69,319	8.9	53,111	3.3	28,537	0.8
2012 ²	309,703	4.5	43,745	23.5	125,556	19.4	58,227	7.3	48,794	2.8	33,381	1.0
2013 ²	365,863	5.3	50,436	23.8	149,243	22.4	64,566	8.6	55,398	3.2	46,221	1.3
2014 ²	348,395	5.0	49,540	25.7	138,565	22.2	67,235	9.3	53,648	3.0	39,407	1.1
2015 ²	383,496	5.4	55,557	28.6	143,351	22.0	78,592	10.4	60,768	3.4	45,229	1.2
2016 ²	362,999	5.0	58,622	32.8	144,156	22.2	76,624	10.0	47,956	2.7	35,640	0.9
2016Q2 ²	377,987	5.2	56,228	31.6	160,065	24.0	68,844	9.0	50,507	2.8	42,343	1.1
2017Q1 ²	352,875	4.7	52,415	27.4	129,114	19.1	64,751	8.8	58,234	3.3	48,361	1.2
2017Q2 ²	380,594	5.1	54,242	29.9	136,443	20.4	96,763	12.4	49,661	2.8	43,485	1.1

¹ - Excluding Northern province² - All the districts are included

Table 3 - Currently Employed persons by Industry group (No. and percentage) (Based on ISIC Fourth Revision) - (Alternative estimates)

Year	Industry group																		
	Total	1	2	3	6	7	8	9	10	11	13	14	15	16	17	19	20	Other	
2013	No.	6,600,172	1,671,216	84,712	1,227,149	515,001	899,928	451,283	146,352	52,763	136,319	58,293	93,101	561,743	279,471	124,054	106,911	151,095	40,778
	%	100.0	25.3	1.3	18.6	7.8	13.6	6.8	2.2	0.8	2.1	0.9	1.4	8.5	4.2	1.9	1.6	2.3	0.6
2014	No.	6,669,590	1,596,116	70,007	1,263,233	530,836	885,220	465,856	159,389	58,863	142,990	44,516	98,294	578,793	293,937	124,437	123,966	181,864	51,273
	%	100.0	23.9	1.0	18.9	8.0	13.3	7.0	2.4	0.9	2.1	0.7	1.5	8.7	4.4	1.9	1.9	2.7	0.8
2015	No.	6,772,896	1,609,226	58,353	1,270,771	523,932	925,132	466,273	176,308	49,686	140,512	60,823	115,388	590,028	300,610	133,581	130,873	167,275	54,126
	%	100.0	23.8	0.9	18.8	7.7	13.7	6.9	2.6	0.7	2.1	0.9	1.7	8.7	4.4	2.0	1.9	2.5	0.8
2016	No.	6,962,973	1,563,142	56,945	1,297,576	591,710	974,467	501,897	175,754	59,445	158,159	51,192	103,576	602,318	317,987	138,767	126,838	196,875	46,324
	%	100.0	22.4	0.8	18.6	8.5	14.0	7.2	2.5	0.9	2.3	0.7	1.5	8.7	4.6	2.0	1.8	2.8	0.7
2016Q2	No.	6,825,460	1,430,796	53,104	1,290,640	581,891	993,043	522,322	161,198	71,392	164,502	44,954	95,031	595,880	303,183	136,272	139,245	195,520	46,487
	%	100.0	21.0	0.8	18.9	8.5	14.5	7.7	2.4	1.0	2.4	0.7	1.4	8.7	4.4	2.0	2.0	2.9	0.7
2017Q1	No.	7,119,982	1,591,080	46,469	1,402,368	651,196	935,447	489,824	159,536	64,378	153,957	58,243	121,688	609,921	362,256	137,373	105,791	186,480	43,975
	%	100.0	22.3	0.7	19.7	9.1	13.1	6.9	2.2	0.9	2.2	0.8	1.7	8.6	5.1	1.9	1.5	2.6	0.6
2017Q2	No.	7,061,997	1,575,512	45,134	1,349,354	644,039	1,052,761	502,327	173,425	58,108	143,909	56,375	112,960	569,304	321,565	152,562	108,742	139,299	56,622
	%	100.0	22.3	0.6	19.1	9.1	14.9	7.1	2.5	0.8	2.0	0.8	1.6	8.1	4.6	2.2	1.5	2.0	0.8

Note: The tabulation groups based on ISIC (Rev.4) are indicated as A,B,C.....U. Due to the limitations on reliability (based on CV),some of these groups have been combined.

Industry Group

1 Agriculture, forestry and fishing (A)

2 Mining & quarrying (B)

3 Manufacturing (C)

6 Construction, Electricity, gas, steam and air conditioning supply, Water supply, sewerage, waste management and remediation activities (D, E,F)

7 Wholesale and retail trade, repair of motor vehicles and motor cycles(G)

8 Transportation and storage (H)

9 Accommodation and food services activities (I)

10 Information and communication (J)

11 Financial and insurance activities (K)

13 Professional, scientific and technical activities (M)

14 Administrative and support service activities (N)

15 Public administration and defence compulsory social security (O)

16 Education (P)

17 Human health and social work activities (Q)

19 Other service activities (S)

20 Activities of households as employers; undifferentiated goods and services - producing activities of households for own use (T)

Other

Other

12 Real estate activities (L)

18 Arts, entertainment and recreation (R)

21 Activities of extra territorial organizations & bodies (U)